

# 1710/2710/4710/9710 Series



# 1710IP/2710IP/4710IP/9710IP Series



## 150/230/400/900MHz Bands

# Data Transceivers

05-3305A01, Rev. E  
September 2023

---

# QUICK START GUIDE

---

Below are the basic steps for installing the transceiver. See “INSTALLATION” on Page 5 of this guide for detailed instructions.

## 1. Install and connect the antenna system to the radio

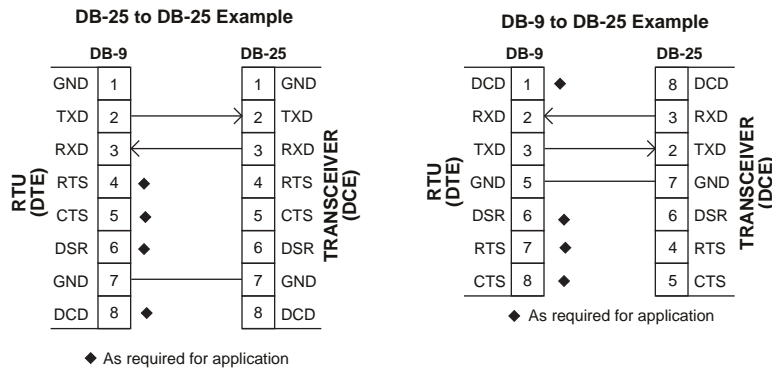
---

- Use good quality, low loss coaxial cable. Keep the feedline as short as possible.
- Preset directional antennas in the direction of desired transmission.

## 2. Connect the data equipment to the radio’s INTERFACE connector

---

- The data port connection to the station must be DB-25 (WDSx710) or RJ45 (WDSx710IP).
- Connect only the required pins. Do not use a straight-through RS-232 cable with all pins wired.
- When using the radio Ethernet interface to send and receive data, if it is connected to HUB, use a straight-through network cable; if it is directly connected to the computer, use a crossover network cable. (WDSx710IP)



## 3. Apply DC power to the radio (10.5–16 Vdc @ 2.5 A for RF 5W minimum)

---

- Observe proper polarity. The red wire is the positive lead; the black is negative.

## 4. Set the radio’s basic configuration with a Hand-Held Terminal (HHT) or PC

---

- Set the transmit frequency (TX xxx.xxxx).
- Set the receive frequency (RX xxx.xxxx).
- Set the baud rate/data interface parameters as follows. Use the **BAUD xxxxx abc** command, where **xxxxx** equals the data speed (110–38400 bps) and **abc** equals the communication parameters as follows:
  - a = Data bits (7 or 8)
  - b = Parity (N for None, O for Odd, E for Even)
  - c = Stop bits (1 or 2)(Example: **BAUD 9600 8N1**)

**NOTE:** 7N1, 8E2 and 8O2 are invalid parameters and are not supported by the transceiver.

## 5. Verify proper operation by observing the LED display

---

- Refer to Table 7 on Page 14 for a description of the status LEDs.
- Refine directional antenna headings for maximum receive signal strength using the **RSSI** command.

---

# TABLE OF CONTENTS

---

1.0 GENERAL .....	1
1.1 Introduction .....	1
1.2 Applications .....	2
Point-to-Multipoint, Multiple Address Systems (MAS) .....	2
Point-to-Point System .....	3
Continuously-Keyed versus Switched-Carrier Operation.....	3
Single-Frequency (Simplex) Operation.....	4
1.3 Model Number Codes .....	4
1.4 Contents of Standard Shipping Packages .....	4
1.5 Accessories .....	5
2.0 INSTALLATION.....	5
2.1 Installation Steps .....	6
2.2 Transceiver Mounting .....	7
2.3 Antennas and Feedlines .....	9
Feedlines .....	9
2.4 Power Connection .....	10
2.5 Safety/Earth Ground .....	10
2.6 Data Interface Connections .....	11
2.7 Using the Radio's Sleep Mode .....	12
System Example .....	13
3.0 OPERATION.....	13
3.1 LED Indicators .....	14
3.2 RSSI Measurement .....	14
4.0 TRANSCEIVER PROGRAMMING .....	15
4.1 Radio Programming Methods.....	15
4.2 PC Connection and Startup. ....	16
4.3 Keyboard Commands .....	18
Entering Commands.....	18
Error Messages.....	19
4.4 Detailed Command Descriptions .....	21
ALARM.....	21
AMASK [0000 0000–FFFF FFFF].....	21
ASENSE [HI/LO] .....	23
BAUD [xxxxx abc] .....	24
BUFF [ON, OFF] [xxx].....	24
CKEY [ON–OFF].....	25
CTS [0–255].....	25
DATAKEY [ON, OFF] .....	25

DEVICE [DCE, CTS KEY].....	25
DKEY .....	26
DIN [ON/OFF] .....	26
DLINK [ON/OFF/xxxx].....	26
DTYPE [NODE/ROOT] .....	26
DUMP .....	26
EMP [ON/OFF].....	26
HREV .....	27
INIT .....	27
INIT [x710] .....	27
INIT [x720] .....	27
KEY .....	28
MODEL .....	28
MODEM [xxxx, NONE].....	28
OWM [XXX...].....	28
OWN [XXX...].....	28
PTT [0–255] .....	28
PWR [20–37].....	28
RSSI.....	29
RTU [ON/OFF/0-80].....	29
RX [xxx.xxxx] .....	29
RXLEVEL [–20 to +6].....	30
RXTOT [NONE, 1-1440] .....	30
SCD [0-255] .....	30
SER.....	30
SHOW [DC, PORT, PWR].....	30
SNR .....	30
SREV .....	31
STAT .....	31
TEMP .....	31
TOT [1-255, ON, OFF] .....	31
TX [xxx.xxxx].....	31
TXLEVEL [–20 to +6, AUTO] .....	32
UNIT [10000..65000].....	32
<b>5.0 TROUBLESHOOTING .....</b>	<b>32</b>
5.1 LED Indicators .....	32
5.2 Event Codes .....	33
Checking for Alarms—STAT command.....	33
Major Alarms vs. Minor Alarms .....	33
Event Code Definitions .....	34
<b>6.0 TECHNICAL REFERENCE .....</b>	<b>35</b>
6.1 1710A/C,4710A/C,4710A/C,9710A/C Transceiver Specifications ..	35
6.2 Helical Filter Adjustment .....	36
6.3 Performing Network-Wide Remote Diagnostics .....	37
6.4 User-Programmable Interface Output Functions .....	39
6.5 Upgrading the Radio's Software .....	40
6.6 External Orderwire Module .....	41

Installation .....	41
Operation .....	42
6.7 dBm-Watts-Volts Conversion Chart .....	43
<u>7.0 WDSx710 IP Series Instructions for Use .....</u>	<u>44</u>

## Copyright Notice

This Installation and Operation Guide and all software described herein are protected by **copyright: 2010 Shenzhen sinosun**. All rights reserved.

WDS reserves its right to correct any errors and omissions in this publication.

## Revision Notice

While every reasonable effort has been made to ensure the accuracy of this manual, product improvements may result in minor differences between the manual and the product shipped to you. If you have additional questions or need an exact specification for a product, please contact our Customer Service Team using the information at the back of this guide. In addition, manual updates can often be found on the Web site at [www.sinosun.cn](http://www.sinosun.cn).

## ISO 9001 Registration

WDS adheres to this internationally accepted quality system standard.

## Quality Policy Statement

We, the employees of sinosun, LLC , are committed to achieving total customer satisfaction in everything we do.

### Total Customer Satisfaction in:

- Conception, design, manufacture and marketing of our products.
- Services and support we provide to our internal and external customers.

### Total Customer Satisfaction Achieved Through:

- Processes that are well documented and minimize variations.
- Partnering with suppliers who are committed to providing quality and service.
- Measuring our performance against customer expectations and industry leaders.
- Commitment to continuous improvement and employee involvement.

# Antenna Installation Warning

1. All antenna installation and servicing is to be performed by **qualified technical personnel** only. When servicing the antenna, or working at distances closer than those listed below, *ensure the transmitter has been disabled.*

Output is measured at the antenna terminal of the transmitter. The antenna(s) used for this transmitter must be fixed-mounted on outdoor permanent structures to provide the minimum separation distances described in this filing for satisfying RF exposure compliance requirements. When applicable, RF exposure compliance may need to be addressed at the time of licensing, as required by the responsible FCC Bureau(s), including antenna co-location requirements of §1.1307(b)(3).

## RF Exposure



Separation distances required for FCC RF Exposure compliance

2. Typically, the antenna connected to the transmitter is a directional (high gain) antenna, fixed-mounted on the side or top of a building, or on a tower. Depending upon the application and the gain of the antenna, the total composite power could exceed 200 watts EIRP. The antenna location should be such that only qualified technical personnel can access it, and that under normal operating conditions no other person can touch the antenna or approach within **3.05 meters** of the antenna.

### Antenna Gain vs. Recommended Safety Distance ( 4710 Series)

	Antenna Gain ( 4710 Series)		
	0–5 dBi	5–10 dBi	10–16.5 dBi
<b>Minimum RF Safety Distance</b>	0.79 meter	1.41 meters	3.05 meters

### Antenna Gain vs. Recommended Safety Distance ( 9710 Series)

	Antenna Gain ( 9710 Series)		
	0–5 dBi	5–10 dBi	10–18.65 dBi
<b>Minimum RF Safety Distance</b>	0.53 meter	0.94 meter	2.6 meters

## FCC Part 15 Notice

The 1710/2710/4710 /9710 transceivers licensed under Part 15 of the FCC Rules. ( 1710/2710/4710/, Part90.210, 403–512 MHz; 9710, Part 101.101, 928–960 MHz) Operation is subject to the following two conditions: (1) this device may not cause harmful interference, and (2) this device must accept any interference received, including interference that may cause undesired operation. This device is specifically designed to be used under Section 15.247 of the FCC Rules and Regulations. Any

unauthorized modification or changes to this device without the express approval of Wireless Data Systems may void the user's authority to operate this device. Furthermore, this device is intended to be used only when installed in accordance with the instructions outlined in this manual. Failure to comply with these instructions may also void the user's authority to operate this device.



## CSA/us Notice

This product is approved for use in Class 1, Division 2, Groups A, B, C & D Hazardous Locations. Such locations are defined in Article 500 of the National Fire Protection Association (NFPA) publication *NFPA 70*, otherwise known as the National Electrical Code.

The transceiver has been recognized for use in these hazardous locations by the Canadian Standards Association (CSA) which also issues the US mark of approval (CSA/US). The CSA Certification is in accordance with CSA STD C22.2 No. 213-M1987.

**CSA Conditions of Approval:** The transceiver is not acceptable as a stand-alone unit for use in the hazardous locations described above. It must either be mounted within another piece of equipment which is certified for hazardous locations, or installed within guidelines, or conditions of approval, as set forth by the approving agencies. These conditions of approval are as follows:

- The transceiver must be mounted within a separate enclosure which is suitable for the intended application.
- The antenna feedline, DC power cable and interface cable must be routed through conduit in accordance with the National Electrical Code.
- Installation, operation and maintenance of the transceiver should be in accordance with the transceiver's installation manual, and the National Electrical Code.
- Tampering or replacement with non-factory components may adversely affect the safe use of the transceiver in hazardous locations, and may void the approval.
- A power connector with screw-type retaining screws as supplied by WDS must be used.



Do not disconnect equipment unless power has been switched off or the area is known to be non-hazardous.

Refer to Articles 500 through 502 of the National Electrical Code (NFPA 70) for further information on hazardous locations and approved Division 2 wiring methods.

## Distress Beacon Warning

In the U.S.A., the 406 to 406.1 MHz band is reserved for use by distress beacons. Since the radio described in this manual is capable of transmitting in this band, take precautions to prevent the radio from transmitting between 406 to 406.1 MHz in U.S. applications.

## ESD Notice



To prevent malfunction or damage to this radio, which may be caused by Electrostatic Discharge (ESD), the radio should be properly grounded by connection to the ground stud on the rear panel. In addition, the installer or operator should follow proper ESD precautions, such as touching a grounded bare metal object to dissipate body charge, prior to adjusting front panel controls or connecting or disconnecting cables on the front or rear panels.

## Environmental Information



The equipment that you purchased has required the extraction and use of natural resources for its production. Improper disposal may contaminate the environment and present a health risk due to hazardous substances contained within. To avoid dissemination of these substances into our environment, and to diminish the demand on natural resources, we encourage you to use the appropriate recycling systems for disposal. These systems will reuse or recycle most of the materials found in this equipment in a sound way. Please contact WDS or your supplier for more information on the proper disposal of this equipment.

**Battery Disposal**—This product may contain a battery. Batteries must be disposed of properly, and may not be disposed of as unsorted municipal waste in the European Union. See the product documentation for specific battery information. Batteries are marked with a symbol, which may include lettering to indicate cadmium (Cd), lead (Pb), or mercury (Hg). For proper recycling return the battery to your supplier or to a designated collection point. For more information see: [www.weerohsinfo.com](http://www.weerohsinfo.com).

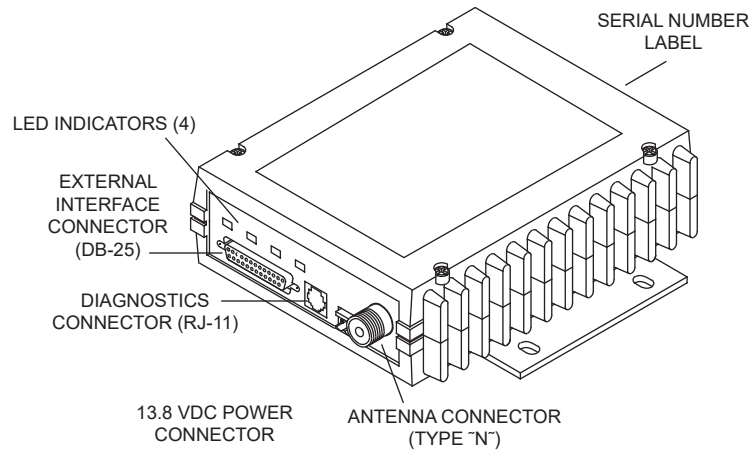
# 1.0 GENERAL

## 1.1 Introduction

This guide presents installation and operating instructions for the 1710A/2710A/4710A/9710A and 1710C/2710C/4710C/9710C Series (150/230/350/400/900 MHz) digital radio transceivers.

These transceivers (Figure 1) are data telemetry radios designed to operate in a point-to-multipoint environment, such as electric utility Supervisory Control and Data Acquisition (SCADA) and distribution automation, gas field automation, water and wastewater SCADA, and online transaction processing applications. They use microprocessor control and Digital Signal Processing (DSP) technology to provide highly reliable communications under adverse conditions.

X710A/C radios use continuous-phase frequency shift keying (CPFSK) modulation with root duo-binary filtering (the sum of two Nyquist-shaped, root-raised cosine responses). Demodulation uses a Viterbi decoder and equalization with soft decision decoding.



Note: RJ-45 External Data Interface/Diagnostic Interface (WDSx710 IP)

**Figure 1. Transceiver Connectors and Indicators**

Modulation and demodulation is accomplished using Digital Signal Processing (DSP). DSP adapts to differences between components from unit to unit, and ensures consistent and repeatable performance in ambient temperatures from  $-40$  to  $+70$  degrees Celsius. The use of Digital Signal Processing eliminates the fluctuations and variations in modem operation that degrade operation of analog circuits.

The transceiver is designed for trouble-free operation with data equipment provided by other manufacturers, including Remote Terminal Units (RTUs), flow computers, lottery terminals, automatic teller machines, programmable logic controllers, and others.

---

**NOTE:** Some features are not available on all radios, based on the options purchased and the applicable regulatory constraints for the region in which the radio operates.

---

## 1.2 Applications

### Point-to-Multipoint, Multiple Address Systems (MAS)

This is the most common application of the transceiver. It consists of a central master station and several associated remote units as shown in Figure 2. A MAS network provides communication between a central host computer and remote terminal units (RTUs) or other data collection devices. The operation of the radio system is transparent to the computer equipment.

Often, however, a radio system consists of many widely separated remote radios. A point-to-multipoint or SCADA (Supervisory Control and Data Acquisition) system might be utilized for automatic, remote monitoring of gas wells, water tank levels, electric power distribution system control and measurement, and so on.

The radio system can replace a network of remote monitors currently linked to a central location via leased telephone line. At the central office of such a system, there is usually a large mainframe computer and a way to switch between individual lines coming from each remote monitor. In this type of system, there is a modulator/demodulator (modem) at the main computer, and at each remote site, usually built into the remote monitor itself. Since the cost of leasing a dedicated-pair phone line is quite high, a desirable alternative is to replace the phone line with a radio path.

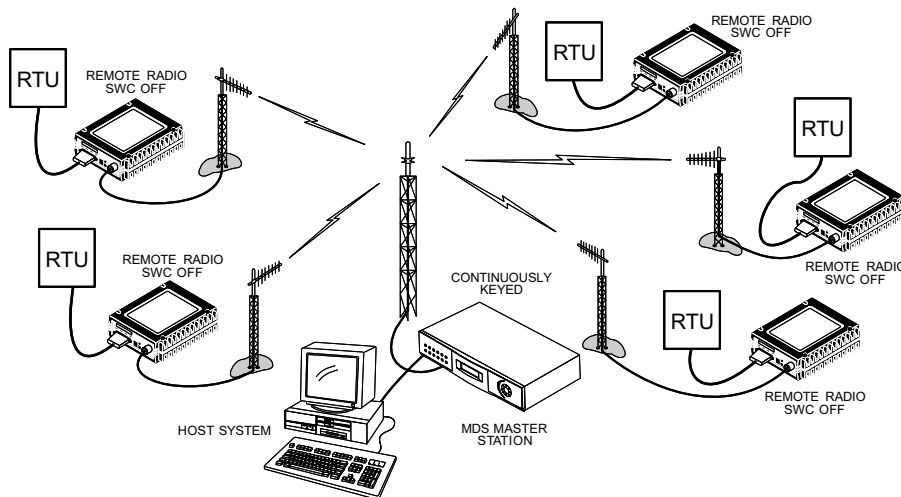


Figure 2. Typical MAS Point-to-Multipoint Network

## Point-to-Point System

Where permitted, the transceiver can also be used in a point-to-point system. A point-to-point system consists of two radios, one serving as a master and the other as a remote (Figure 3). This system provides a simplex or half-duplex communication link for the transfer of data between two locations.

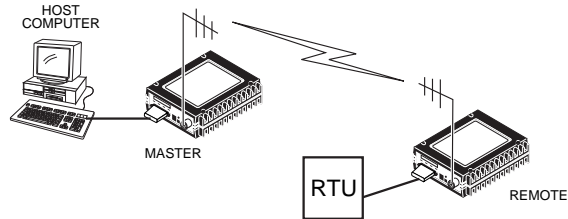


Figure 3. Typical Point-to-Point Link

## Continuously-Keyed versus Switched-Carrier Operation

*Continuously-Keyed* operation means the master station transmitter is always keyed and an RF carrier is always present, even when there is no data to send. The master station is always simultaneously transmitting and listening. Use different frequencies to transmit and receive. This is the method used in many MAS systems, as is shown in the typical system in Figure 2. This is network arrangement useful for high-speed polling applications.

---

**NOTE** 1710/2710/4710/9710 remotes do not support full-duplex operation.

---

*Switched-Carrier* operation is a half-duplex mode where the master station transmitter is keyed to send data and unkeyed to receive. The transceiver uses different frequencies for transmit and receive. This prevents different remotes from interfering with each other, making it easier to implement SCADA protocols. This mode results in slower polling times than a Continuous-Keyed master due to the keying time for the master and squelch opening time for the remote.

Additional information:

- Remotes always operate in switched-carrier mode, but can receive data from a master that operates in either switched-carrier or continuously-keyed modes.
- A single-frequency system cannot utilize a continuously keyed master.
- An advantage of a continuously-keyed master is that it provides a constant signal source to remotes that require a constant Data Carrier Detect signal.

## Single-Frequency (Simplex) Operation

Single-frequency operation (also known as simplex) is a special case of switched-carrier operation. Single frequency operation is automatically selected whenever the transmit and receive frequencies are set to the same value. Simplex mode results in slower polling because the TX synthesizer must move off the RX channel to receive, and back to transmit.

Single-frequency operation is useful for peer-to-peer communication using omni-directional antennas with radios in close proximity to each other.

## 1.3 Model Number Codes

The radio model number is printed on the end of the radio enclosure and provided through the software command **MODEL** (Page 28). It provides key information about how the radio was configured when it was shipped from the factory. This number is subject to many variations depending on what options are installed, and in which country the product is used. Contact us if you have questions on the meaning of the code.

## 1.4 Contents of Standard Shipping Packages

Table 1 and Table 2 list the content of routine shipments of 1710/2710/4710/9710 transceiver. The contents might be modified to reflect customer requirements specified at the time the order was placed.

**Table 1. Standard—Accessories (Supplied with All Orders)**

Item Description	MDS Part Number
Transceiver Power Cable Assembly 12 Vdc, (UL-Approved)	03-1846A02
Cable, TELCO-Type, 84", RJ12 to RJ12	03-2198A05
Radio Configuration Software for Windows OS	03-3156A01
Installation & Operation Guide	05-3305A01
Connector, RJ-11 to DB-9 (Female)	73-2434A02

**Table 2. Items Supplied with Diagnostic Option**

Item Description	MDS Part Number
InSite 6 Network Diagnostics Software (CD-ROM)	03-3533A01
InSite Network Diagnostics Manual	05-3467A01

## 1.5 Accessories

The transceiver can be used with one or more of the accessories listed in [Table 3](#). Contact us for ordering information.

**Table 3. Optional Accessories for 1710/2710/4710/9710 Transceivers**

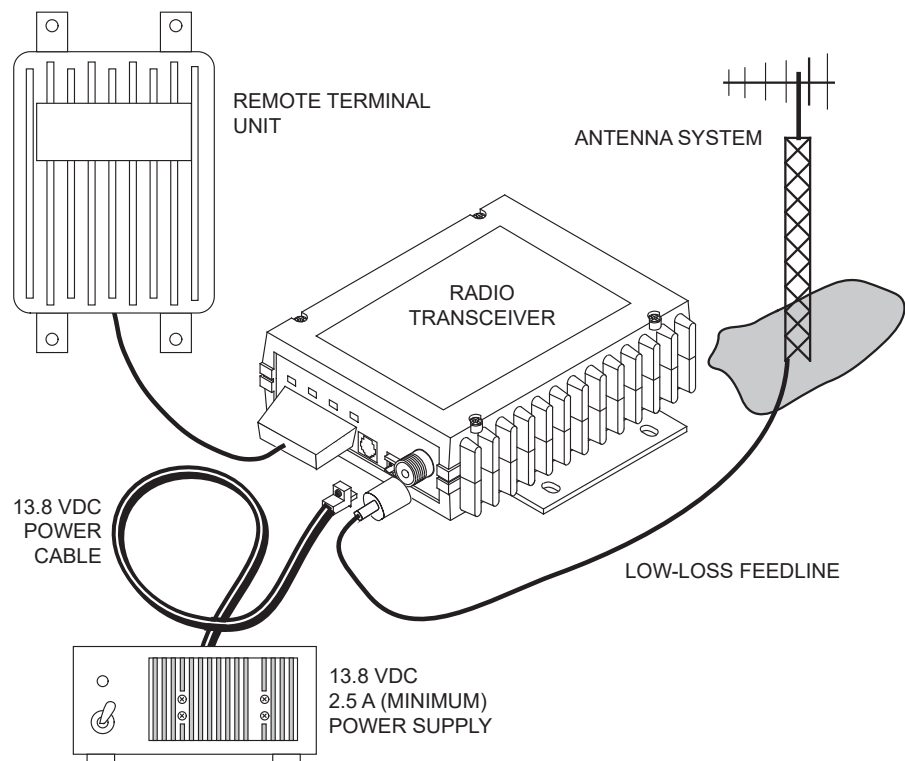
Accessory	Description	MDS P/N
Power Supply Kit	Provides nominal 13.8 Vdc from a 120 Vac power source. Includes DC cable for transceiver.	01-3682A01
Hand-Held Terminal Kit (HHT)	Terminal that plugs into the radio for programming, diagnostics and control. Includes carrying case and cable set.	02-1501A01
RTU Simulator	Test unit that simulates data from a remote terminal unit. Comes with polling software that runs on a PC. Useful for testing radio operation.	03-2512A01
Orderwire Module	External device that allows temporary voice communication. Useful during setup and testing of the radio system.	02-1297A01
Orderwire Handset	Used with Orderwire Module (above)	
	Standard Handset	12-1307A01
	Handset with PTT	12-1307A02
RJ-11 to DB-9 adapter	Used to connect a PC to the radio's DIAG (Diagnostics) port	03-3246A01
EIA-232 to EIA-422 Converter Assembly	External adapter plug that converts the radio's DATA INTERFACE connector to EIA-422 compatible signaling.	03-2358A01
Radio Configuration Software	Provides diagnostics of the transceiver (Windows-based PC required).	03-3156A01

## 2.0 INSTALLATION

There are three main requirements for installing the transceiver:

- Adequate and stable primary power
- A good antenna system, and the correct data connections between the transceiver, and
- The data device.

[Figure 4](#) shows a typical remote station arrangement.



**Figure 4. Typical Remote Station Arrangement**

## 2.1 Installation Steps

Below are the basic steps for installing the transceiver. In most cases, these steps alone are sufficient to complete the installation. More detailed explanations appear at the end of these steps.

1. Mount the transceiver to a stable surface using the brackets supplied with the radio.
2. Install the antenna and feedline for the station. Point directional antennas in the direction of the associated network's Master Station.
3. Connect the data equipment to the transceiver's DATA INTERFACE connector. Use only the required pins for the application—Do *not* use a fully pinned (25-conductor) cable. Basic applications might require only the use of Pin 2 (Transmit Data—TXD), Pin 3 (Received Data—RXD) and Pin 7 (Signal Ground). The radio can be keyed by using the **DATAKEY** command.

Additional connections might be required for some installations. Refer to the complete list of pin functions provided in [Table 6 on Page 11](#).

4. Measure and install the primary power for the radio. The red wire on the provided power cable is the positive lead; the black is negative.



---

**Only use the 1710/2710/4710/9710 radio transceivers in negative-ground systems.**

**Connection to a positive-ground system or an accidental reversal of the power leads can damage the transceiver.**

---

5. Set the radio configuration. In most cases, the transceiver requires only minimal software configuration. The selections that *must* be made for new installations are:
  - Transmit frequency (“TX [xxx.xxxx]” on Page 31)
  - Receive frequency (“RX [xxx.xxxx]” on Page 29)

The operating frequencies are not set at the factory unless they were specified at the time of order. Determine the transmit and receive frequencies to be used, and follow the steps below to program them.

6. Connect a hand-held terminal (or PC) to the DIAG (diagnostic) connector. When the HHT beeps, press **ENTER** to receive the ready “>” prompt.
7. Set the operating frequencies using the **TX xxx.xxxx** (transmit) and **RX xxx.xxxx** (receive) commands.

Press **ENTER** after each command. After programming, the HHT reads **PROGRAMMED OK** to indicate successful entry.

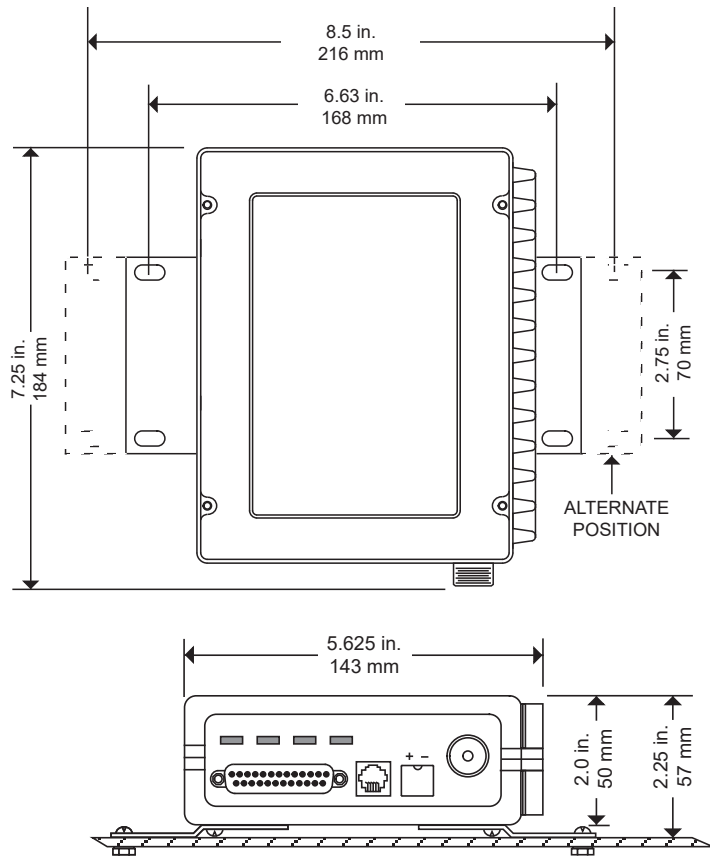
## 2.2 Transceiver Mounting

---

**NOTE:** To prevent moisture from entering the radio, do not mount the radio with the cable connectors pointing up. Also, dress all cables to prevent moisture from running along the cables and into the radio.

---

Figure 5 shows the mounting dimensions of the transceiver.



**Figure 5. Transceiver Mounting Dimensions**

**CAUTION**  
**POSSIBLE**  
**EQUIPMENT**  
**DAMAGE**

Using screws longer than 1/4 inch (6 mm) to attach the brackets to the radio might damage the internal PC board. Use only the supplied screws.

## 2.3 Antennas and Feedlines

### Antennas

The transceiver can be used with a number of antenna styles. The exact style depends on the physical size and layout of the radio system. A directional Yagi (Figure 6) or corner reflector antenna is generally recommended at remote sites to minimize interference to and from other users. Antennas of this type are available from several manufacturers.

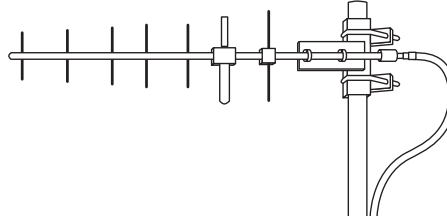


Figure 6. Typical Yagi Antenna (mounted to mast)

### Feedlines

The selection of antenna feedline is very important. Avoid poor quality cables as they will result in power losses that can reduce the range and reliability of the radio system.

Table 4 and Table 5 show the losses that will occur when using various lengths and types of cable at 400 and 960 MHz. Keep the cable as short as possible to minimize signal loss.

Table 4. Length vs. Loss in Coaxial Cables at 400 MHz

Cable Type	10 Feet (3.05 Meters)	50 Feet (15.24 Meters)	100 Feet (30.48 Meters)	500 Feet (152.4 Meters)
RG-8A/U	0.51dB	2.53 dB	5.07 dB	25.35 dB
1/2 inch HELIAX	0.12 dB	0.76 dB	1.51 dB	7.55 dB
7/8 inch HELIAX	0.08 dB	0.42 dB	0.83 dB	4.15 dB
1-1/4 inch HELIAX	0.06 dB	0.31 dB	0.62 dB	3.10 dB
1-5/8 inch HELIAX	0.05 dB	0.26 dB	0.52 dB	2.60 dB

**Table 5. Length vs. Loss in Coaxial Cables at 960 MHz**

<b>Cable Type</b>	<b>10 Feet (3.05 Meters)</b>	<b>50 Feet (15.24 Meters)</b>	<b>100 Feet (30.48 Meters)</b>	<b>500 Feet (152.4 Me- ters)</b>
RG-8A/U	0.85 dB	4.27 dB	8.54 dB	42.70 dB
1/2 inch HELIAX	0.23 dB	1.15 dB	2.29 dB	11.45 dB
7/8 inch HELIAX	0.13 dB	0.64 dB	1.28 dB	6.40 dB
1-1/4 inch HELIAX	0.10 dB	0.48 dB	0.95 dB	4.75 dB
1-5/8 inch HELIAX	0.08 dB	0.40 dB	0.80 dB	4.00 dB

## 2.4 Power Connection

The transceiver is compatible with any well-filtered 10.5 to 16 Vdc power source. The power supply should be capable of providing at least 2.5 A (for RF 5W) of continuous current.

The red wire on the power cable is the positive lead; the black is negative.

---

**NOTE:** The radio is designed for use only in negative ground systems.

---

## 2.5 Safety/Earth Ground

To minimize the chances of damage to the transceiver and connected equipment, a good safety ground is recommended which bonds the antenna system, the radio transceiver, power supply, and connected data equipment to a single-point ground. Normally, the transceiver is adequately grounded if the mounting brackets are used to secure the radio to a well-grounded metal surface.

If the transceiver is not mounted to a grounded surface, connect a safety ground to the transceiver case. A ground can be connected to one of the four screws on the bottom of the transceiver. Do not use any of the four screws that hold together the upper and lower parts of the transceiver case.

Connect all rack equipment and associated hardware grounds to the building's ground system for the primary power. The objective is to create a single-point ground system, keeping all grounds leads as short as possible.

To prevent damage, provide a good ground connection for the equipment connected to the INTERFACE connector.

Finally, use lightning protectors where the antenna transmission lines enter the building. Bond them to the tower ground, if it is nearby.

## 2.6 Data Interface Connections

Connect the transceiver's DATA INTERFACE connector to an external DTE data terminal that supports the EIA-232 (formally RS-232) format. The transceiver supports autobaud asynchronous data rates of up to 19200 bps. The data rate at the DATA INTERFACE connector might differ from the data rate used over the air.

Table 6 lists and describes each pin on the DATA INTERFACE connector.



Do not use a 25 wire (fully pinned) cable for connection to the DATA INTERFACE connector. Use *only* the required pins for the application. Damage can result if improper connections are made. Typical applications require the use of *only* Pins 1 through 8 for EIA-232 signaling.

**Table 6. DATA INTERFACE Connector Pinouts**

Pin Number	Input/Output	Pin Description
1	--	<b>Protective Ground.</b> Connects to ground (negative supply potential) on the radio's PC board and chassis.
2	IN	<b>TXD—Transmitted Data.</b> Accepts TX data from the connected device.
3	OUT	<b>RXD—Received Data.</b> Outputs received data to the connected device.
4	IN	<b>RTS—Request-to-Send Input.</b> Keys the transmitter when RTS is at logic high.
5	OUT	<b>CTS—Clear-to-Send Output.</b> Goes logic high after the programmed CTS delay time has elapsed (DCE) or keys an attached radio when RF data arrives (CTS KEY).
6	OUT	<b>DSR—Data Set Ready.</b> Provides a +6 Vdc DSR signal through a 2.5 k $\Omega$ resistor.
7	--	<b>Signal Ground.</b> Connects to ground (negative supply potential) at radio's PC board.
8	OUT	<b>DCD—Data Carrier Detect.</b> Goes to logic high when the modem detects a data carrier from the master station.
9	IN	<b>Transmit Audio Input.</b> Connects to the audio output of an external (AFSK) modem. The input impedance is 600 $\Omega$ . Use Pin 7 for the modem's return lead.
10	OUT	<b>RUS—Receiver Unsquelched Sensor.</b> Not used in most installations, but is available as a convenience. Provides +8 Vdc through a 1 k $\Omega$ resistor whenever the receiver squelch is open, and drops to less than 1 Vdc when the squelch is closed.
11	OUT	<b>Receive Audio Output.</b> Connects to the audio input of an external (AFSK) modem. The output impedance is 600 $\Omega$ , and the level is factory set to suit most installations. Use Pin 7 for the modem's return lead.
12	IN	<b>Radio Inhibit (Sleep).</b> A ground on this pin places the radio in sleep mode. It turns off most circuits in the radio, including transmit, receive, modem and diagnostic functions. This allows for greatly reduced power consumption, yet preserves the radio's ability to be quickly brought online.

**Table 6. DATA INTERFACE Connector Pinouts (Continued)**

Pin Number	Input/Output	Pin Description
13	--	Do not connect—Reserved for future use.
14	IN	<b>PTT—Push-to-Talk.</b> This line is used to key the radio with an active-high signal of +5 Vdc.
15	--	<b>User-Programmable Output 2—</b> EIA-232-compatible output controllable through GE MDS' InSite NMS program. See "User-Programmable Interface Output Functions" on Page 39 for details.
16	IN	<b>PTT—Push to Talk.</b> This line is used to key the radio with an active-low signal of 0 Vdc.
17	--	Do not connect—Reserved for future use.
18	OUT	<b>Accessory Power.</b> Unregulated Output. Provides a source of input power for low current accessories. Excessive drain on this connection trips the self-resetting fuse F1 on the transceiver PC board. The voltage at this pin matches the input voltage to the transceiver.
19	OUT	<b>9.9 Vdc Regulated Output.</b> Provides a source of regulated voltage at 100 mA for low power accessories.
20	485+	for RS485 interface use.
21	OUT	<b>RSSI—Received Signal Strength Indication.</b> Connect a DC voltmeter to this pin to read the relative strength of the incoming signal. Figure 8 on Page 15 shows RSSI vs. DC voltage.
22	485-	for RS485 interface use.
23	IN	<b>Diagnostic Channel Enable.</b> A ground on this pin causes the radio's microcontroller to open the DB-25 DATA INTERFACE for diagnostics and control instead of the normal RJ-11 DIAG connection.
24	--	Do not connect—Reserved for future use.
25	OUT	<b>Alarm.</b> A logic low (less than 0.5 Vdc) on this pin indicates normal operation. A logic high (greater than 4 Vdc) indicates that some alarm condition is present. This pin can be used as an alarm output, provided the internal series resistance of 1 kΩ is considered.

## 2.7 Using the Radio's Sleep Mode

In some installations, such as at solar-powered sites, use Sleep Mode to keep the transceiver's power consumption to an absolute minimum. In Sleep Mode, power consumption is reduced to less than 15 mA (nominal), yet preserves the radio's ability to be brought online quickly.

All normal functions are suspended while the radio is in Sleep Mode. The PWR LED is off, except for a quick flash every 5 sec.

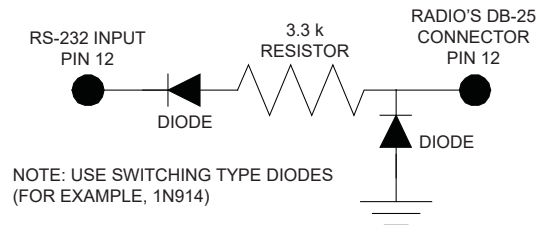
Enable Sleep Mode through RTU control by asserting a ground on Pin 12 of the radio's DATA INTERFACE connector. When Pin 12 is opened, the radio will be ready to receive data after a delay period that varies with modem type. With **MODEM NONE**, the delay will be less than 75 ms. Digital modems will typically require an additional 60 to 100 ms to receive data when receiving a continuous keyed master station. This additional delay is reduced to less than 20 ms when receiving a switch-keyed master station.

---

**NOTE:** Our radio recommends against applying RS-232 voltages to Pin 12 of the radio's DB 25 connector. Only apply ground or +5 Vdc to this pin. Our radio recommends that you connect the radio and RTU using the circuit shown in Figure 7.

For information on using an ABB Totalflow meter to control the radio's sleep mode, refer to *GE MDS Product Bulletin PB-0904*.

---



**Figure 7. RTU to Pin 12 Interconnect Circuit**

## System Example

The following example describes Sleep Mode implementation in a typical system. Use this information to configure a system that meets your particular needs.

### Sleep Mode Example:

You need communication to each remote site only once per hour. Program the RTU to raise an RS-232 line once each hour (DTR, for example), and wait for a poll and response before lowering it again. Connect this line to Pin 12 of the radio's DATA INTERFACE connector. This allows each RTU to be polled once per hour with a significant savings in power consumption.

## 3.0 OPERATION

In-service operation of the transceiver is completely automatic. Once the unit is properly installed and configured, operator actions are limited to observing the front panel LED status indicators for proper operation.

If all parameters are correctly set, start radio operation by following these steps:

1. Apply DC power to the transceiver.
2. Observe the LED status panel for the proper indications (Table 7).
3. If not done earlier, refine the antenna heading of the station to maximize the received signal strength (RSSI) from the master station.

Use the **RSSI** command from an HHT or PC connected to the radio's DIAG connector. See *Section 4.0, TRANSCIVER PROGRAMMING* on Page 15. This can also be done with a DC voltmeter as described in *Section 3.2, RSSI Measurement* (Page 14).

### 3.1 LED Indicators

Table 7 describes the function of each status LED.



**Table 7. LED Status Indicators**

LED Name	Description
<b>PWR</b>	<ul style="list-style-type: none"> <li>• Continuous—Power is applied to the radio, no problems detected.</li> <li>• Rapid flash (five times-per-second)—Fault indication.</li> <li>• Flashing once every 5 seconds—Radio is in Sleep mode.</li> </ul>
<b>DCD</b>	<ul style="list-style-type: none"> <li>• Flashing—Indicates the radio is receiving intermittent data frames.</li> <li>• Continuous—Radio is receiving a data signal from a continuously keyed radio.</li> </ul>
<b>TXD</b>	An EIA-232 mark signal is being received at the DATA INTERFACE connector.
<b>RXD</b>	An EIA-232 mark signal is being sent out from the DATA INTERFACE connector.

### 3.2 RSSI Measurement

As an alternative to using an HHT, the radio's received signal strength (RSSI) can be read with a DC voltmeter connected to Pin 21 of the DATA INTERFACE connector. Figure 8 shows the relationship between received signal level and the DC voltage on Pin 21 of the DATA INTERFACE connector. (Note: Readings are not accurate for incoming signal strengths above -50 dBm.)

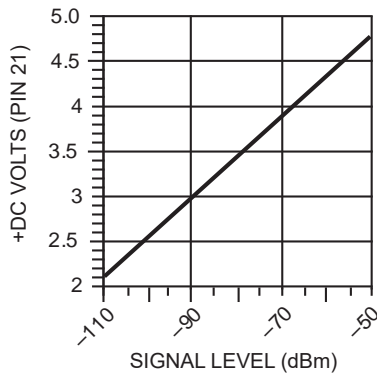


Figure 8. RSSI vs. Vdc (Typical)

## 4.0 TRANSCEIVER PROGRAMMING

To program and read the transceiver, use the radio's RJ-11 DIAG (Diagnostics) connector with a personal computer through a diagnostic cable. This section contains a reference chart ( Table 9 ) and detailed descriptions for each user command.

### IMPORTANT!!!

**NOTE:** In addition to HHT control, **Windows- based software is available (MP/ N 03-3156A01) to allow diagnostics and programming using a personal computer.** An installation booklet and on-line instructions are included with the software. Contact us for ordering information.

### 4.1 Radio Programming Methods

#### ① PC with Radio Configuration Software

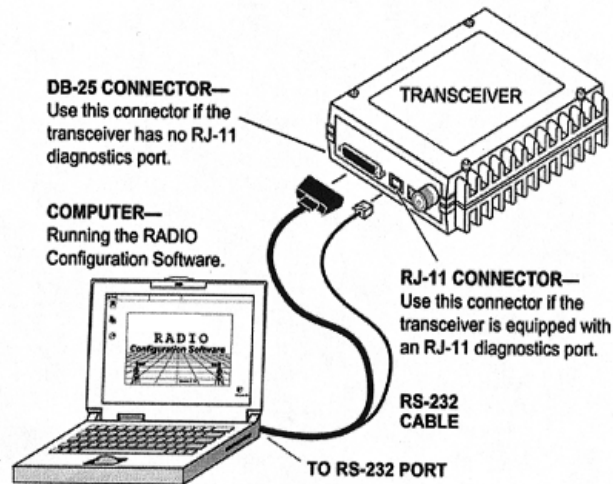
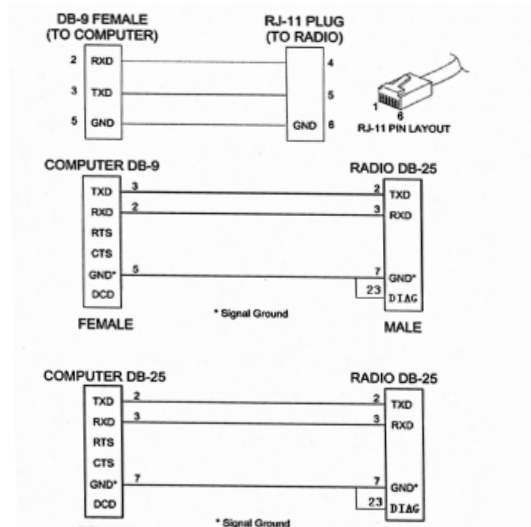
1. Connect a diagnostic cable between the computer or laptop and the radio.
2. Connect the power supply to the radio.
3. With the radio is connected to the computer in Radio configuration software.
4. Ensure the correct port is selected in the Commport field in the confirgation ribbon.

**NOTE:** When using radio configuration software, click on the opening screen or press a key to activate the program.

#### ② PC in Terminal Mode

A PC may also be used *without* the Radio Configuration software by operating it in a basic terminal mode (e.g., HyperTerminal session) and entering the radio commands listed in Table 9. **The terminal communication parameters must be set to 9600 bps, with 8 data bits, no parity, and 1 stop bit (8N1).**

## 4.2 PC Connection and Startup



A. Follow the steps below to prepare the radio for PC programming.

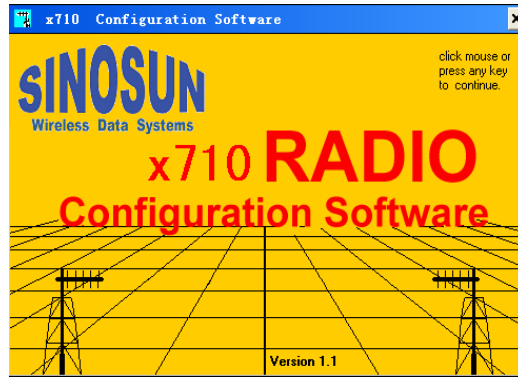
a. install "SCADA(X710) Radio Configuration Software "

b. operation software.

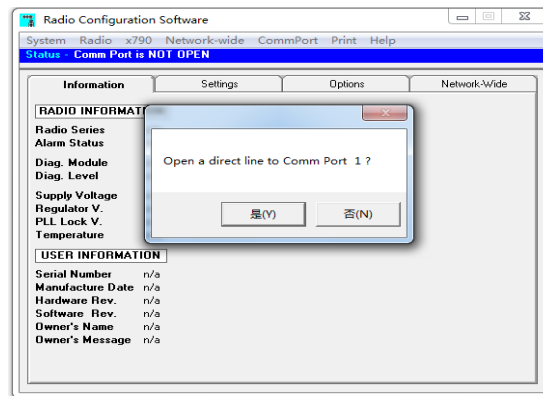
1. double click the icon



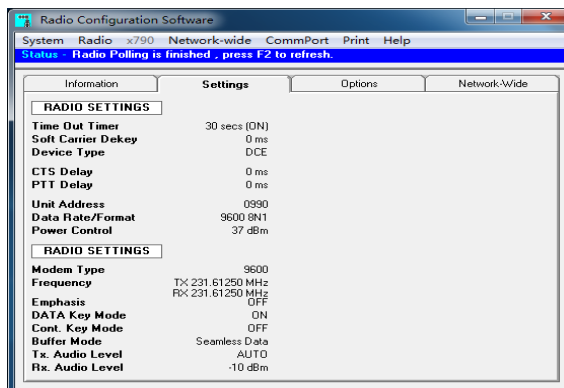
2.click on the opening screen



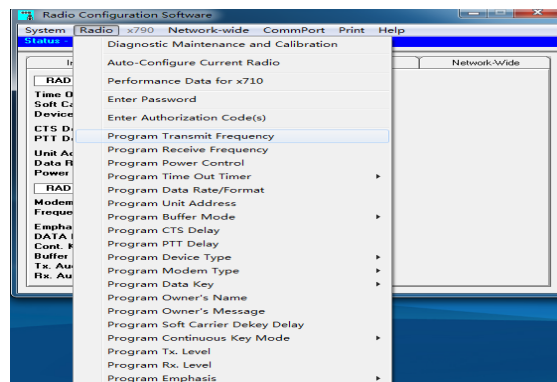
3.select "Commport " read the radio parameters



4. radio parameters



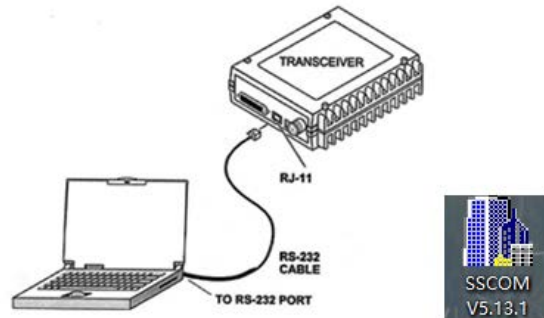
5. select "Radio " program the radio parameters



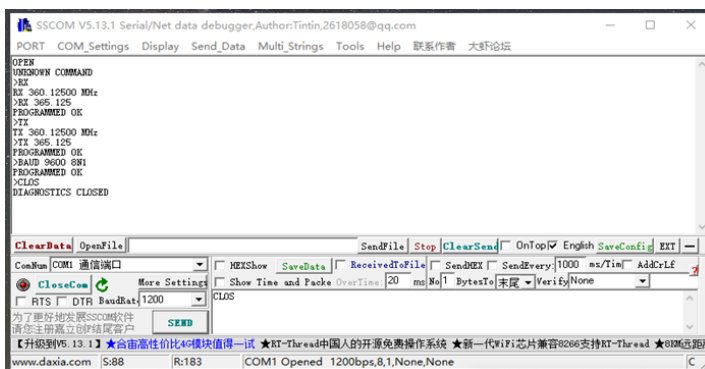
B、 Win7 Win10 operating system selection, folder the following icons, follow the prompts to install the software



C、 Through the serial assistant SSCOMV 5.13.1, enter the X710 radio to change the transmission and reception frequency, data format and other parameters



1. Connect the diagnostic cable of X710 radio, open the SSCOM V5.13.1 Serial port assistant software, set the data format "1200 8N1", and open the serial port.
2. Enter the "OPEN" command, click "Send", and receive "DIAGNOSTICS OPEN next line >" to enter the programming state.
- 3, check the receiving frequency, enter RX and click "Send", receive "RX RX xxx.xxx"; Change the radio receive frequency, for example: RX space 365.125 Click Send and receive "RX 365.125 PROGRAMMED space OK".
- 4, view the transmission frequency, enter TX and click "Send", receive "TX TX xxx.xxx"; Change the radio transmission frequency, for example: TX space 365.125 Click "Send" and receive "TX 365.125 PROGRAMMED space OK".
5. Enter the phrase "BAUD space xxxx space xxx and click Send" and receive the phrase "PROGRAMMED space OK" and change the serial port data format of the radio station. For example, enter the phrase "BAUD 9600 space 8N1 PROGRAMMED space OK".
- 6, enter the "CLOS" command or unplug the RJ11 programming cable to exit programming. Refer to the following figure to set up the serial debugging assistant SSCOM V5.13.1, you can enter the X710 radio to view the change parameters:



## 4.3 Keyboard Commands

Table 9 on Page 19 is a reference chart of software commands for the transceiver. Programmable information is shown in brackets [ ] following the command name. See *Section 4.4, Detailed Command Descriptions (Page 21)* for detailed command descriptions.

### Entering Commands

To enter a command, type the command, and then press the **ENTER** key.

For programming commands:

1. Type the command.
2. Press the  key.  
The appropriate information or values follow.
3. Press the  key.

Additional points to remember when using the HHT:

- Use the  key to access numbers; press again to return to letter mode.
- Use the  key to edit information or command entries.
- The flashing square cursor (▣) indicates that Letter Mode is selected.
- The flashing superscript rectangular cursor (≡) indicates that Number Mode is selected.

### Error Messages

Below are possible error messages encountered when using the HHT:

**UNKNOWN COMMAND**—The command was not recognized. Refer to the command description for command usage information.

**INCORRECT ENTRY**—The command format or its associated values were not valid. Refer to the command description for command usage information.

**COMMAND FAILED**—The command was unable to successfully complete. This is a possible internal software problem.

**NOT PROGRAMMED**—Software was unable to program the internal radio memory or the requested item was not programmed. This is a serious internal radio error. Contact GE MDS.

**TEXT TOO LONG**—Response to **OWN** or **OWM** command when too many characters are entered. Refer to the command description for command usage information.

**NOT AVAILABLE**—The entered command or parameter was valid, but it referred to a currently unavailable choice. Refer to the command description for command usage information.

**ACCESS DENIED**—The command is unavailable to the user. Refer to the command descriptions for command information.

**EEPROM FAILURE**— The **INIT** command was unable to write to EEPROM. This is a serious internal radio error. Contact us.

See Table 9 for a summary of the user commands.

**Table 9. Command Summary**

Command name	Function
<b>ALARM</b> <i>Details Page 21</i>	Read current operating condition of radio.
<b>AMASK [0000 0000–FFFF FFFF]</b> <i>Details Page 21</i>	Set or display hex code identifying which events trigger an alarm.
<b>ASENSE [HI/LO]</b> <i>Details Page 23</i>	Set or display the state of the alarm output signal to ACTIVE HI or ACTIVE LO.
<b>BAUD [xxxxx abc]</b> <i>Details Page 24</i>	Set or display the DATA INTERFACE data rate and control bits.
<b>BUFF [ON, OFF] [xxx]</b> <i>Details Page 24</i>	Enables or disables the internal radio data buffer.
<b>CTS [0–255]</b> <i>Details Page 25</i>	Set or display the Clear-to-Send delay in seconds.
<b>CKEY [ON–OFF]</b> <i>Details Page 25</i>	Enables or disables the continuously keyed mode. Note: Remotes cannot receive when keyed.
<b>DATAKEY [ON, OFF]</b> <i>Details Page 25</i>	Enables or Disables key-on-data mode (ON = key-on-data or RTS, OFF = key-on-RTS).
<b>DEVICE [DCE, CTS KEY]</b> <i>Details Page 25</i>	Set/display device mode.
<b>DKEY</b> <i>Details Page 26</i>	Dekey the radio (transmitter OFF). This is generally a radio test command.
<b>DIN [ON/OFF]</b> <i>Details Page 26</i>	Configures local diagnostic link protocol.
<b>DTYPE [NODE/ROOT]</b> <i>Details Page 26</i>	<i>(Diagnostics)</i> Sets up a radio as a root or node radio.
<b>DUMP</b> <i>Details Page 26</i>	Display all programmable settings.
<b>HREV</b> <i>Details Page 27</i>	Display the Hardware Revision level.
<b>INIT</b> <i>Details Page 27</i>	Set radio parameters to factory defaults.
<b>INIT [x710]</b> <i>Details Page 27</i>	Configure radio for use <i>outside</i> of P-20 chassis. Restores certain transceiver defaults changed by the <b>INIT x720</b> command.
<b>INIT [x720]</b> <i>Details Page 27</i>	Configure radio for service <i>within</i> a P-20 redundant/protected chassis.
<b>KEY</b> <i>Details Page 28</i>	Key the radio (transmitter ON). This is generally a radio test command.
<b>MODEL</b> <i>Details Page 28</i>	Display the model number of the radio.
<b>MODEM [xxxx, NONE]</b> <i>Details Page 28</i>	Set the modem characteristics of the radio.
<b>OWM [XXX...]</b> <i>Details Page 28</i>	Set or display the owner's message.
<b>OWN [XXX...]</b> <i>Details Page 28</i>	Set or display the owner's name.
<b>PTT [0–255]</b> <i>Details Page 28</i>	Set or display the Push-to-Talk delay in milliseconds.
<b>PWR [20–37]</b> <i>Details Page</i>	Set or display the transmit power setting.

**Table 9. Command Summary (Continued)**

Command name	Function
28	
<b>RSSI</b> <i>Details Page 29</i>	Display the Received Signal Strength Indication.
<b>RTU [ON/OFF/0-80]</b> <i>Details Page 29</i>	Re-enables or disables the radio's internal RTU simulator and sets the RTU address.
<b>RX [xxx.xxxx]</b> <i>Details Page 29</i>	Set or display receiver frequency.
<b>RXLEVEL [-20 to +6]</b> <i>Details Page 30</i>	Set or display the receive audio input level.
<b>RXTOT [NONE, 1-1440]</b> <i>Details Page 30</i>	Set or display the value of the receive time-out timer.
<b>SCD [0-255]</b> <i>Details Page 30</i>	Set or display the Soft-Carrier Dekey delay in milliseconds.
<b>SER</b> <i>Details Page 30</i>	Display the radio serial number.
<b>SHOW [DC, PORT, PWR]</b> <i>Details Page 30</i>	Display the DC voltages, diagnostics port, and transmit power level.
<b>SREV</b> <i>Details Page 31</i>	Display the Software Revision Level.
<b>STAT</b> <i>Details Page 31</i>	Display radio status and alarms.
<b>TEMP</b> <i>Details Page 31</i>	Display the internal temperature of the radio in degrees C.
<b>TOT [1-255, ON, OFF]</b> <i>Details Page 31</i>	Set or display the Time-out Timer delay in seconds.
<b>TX [xxx.xxxx]</b> <i>Details Page 31</i>	Set or display the transmit frequency.
<b>TXLEVEL [-20 to +6, AUTO]</b> <i>Details Page 32</i>	Set or display the transmit audio input level.
<b>UNIT [10000...65000]</b> <i>Details Page 32</i>	Set or display the transceiver's unit address.

## 4.4 Detailed Command Descriptions

The only *critical* commands for most applications are transmit and receive frequencies (**RX xxx.xxxx**, **TX xxx.xxxx**). However, proper use of the additional commands allows you to tailor the transceiver for a specific use, or conduct basic diagnostics on the radio. This section provides more detailed information for the user commands previously listed in [Table 9 \(Page 19\)](#).

In many cases, the commands shown here can be used in two ways:

- You can type *only* the command name to view the currently programmed data.
- You can set or change the existing data by typing the command, followed by a space, and then the desired entry. In the list below, acceptable programming variables, if any, are shown in brackets following the command name.

## Alarm Mask

### ALARM

The ALARM command displays a summary of the radio's current operating condition. An eight-digit hexadecimal code is presented that can be decoded as described in "Major Alarms vs. Minor Alarms" on Page 33.

### AMASK [0000 0000–FFFF FFFF]

The AMASK command displays or sets a mask indicating which events cause the alarm output signal to be active. Normally, the mask is FFFF FFFF, meaning that any of the 32 possible events can activate the alarm output signal.

Entering the AMASK command alone displays the current setting of alarm events in hexadecimal format.

Entering the AMASK command followed by an eight-digit hexadecimal number reprograms the specified events to trigger an alarm.

The eight-digit hexadecimal number used as the command parameter specifies 0 to 32 events that can trigger the external alarm output (see Table 10 below for a list of events). The hex value for the mask corresponds to the hex value for the **STAT** command (Page 31). Each bit that is a '1' identifies an alarm condition that can trigger the external output.

**Table 10. Alarm Event Codes and Hex/Binary Values**

Event Number	Text Message	Alarm Code (hex)	32-bit Binary Equivalent
00	Network address	8000 0000	1000 0000 0000 0000 0000 0000 0000 0000
01	Hardware mismatch	4000 0000	0100 0000 0000 0000 0000 0000 0000 0000
02	Model number not programmed	2000 0000	0010 0000 0000 0000 0000 0000 0000 0000
03	Authorization fault	1000 0000	0001 0000 0000 0000 0000 0000 0000 0000
04	Synthesizer out-of-lock	0800 0000	0000 1000 0000 0000 0000 0000 0000 0000
05	<i>Reserved</i>		
06	Peripheral fault or RAM fault	0200 0000	0000 0010 0000 0000 0000 0000 0000 0000
07	Voltage regulator fault detected	0100 0000	0000 0001 0000 0000 0000 0000 0000 0000
08	Radio not calibrated	0080 0000	0000 0000 1000 0000 0000 0000 0000 0000
09	DSP download fault	0040 0000	0000 0000 0100 0000 0000 0000 0000 0000
10	NVRAM fault	0020 0000	0000 0000 0010 0000 0000 0000 0000 0000
11	<i>Reserved</i>		
12	Receiver time-out	0008 0000	0000 0000 0000 1000 0000 0000 0000 0000
13	Time out command	0004 0000	0000 0000 0000 0100 0000 0000 0000 0000
14	<i>Reserved</i>		
15	Output power fault	0001 0000	0000 0000 0000 0001 0000 0000 0000 0000
16	Unit address not programmed	0000 8000	0000 0000 0000 0000 1000 0000 0000 0000
17	Data parity error	0000 4000	0000 0000 0000 0000 0100 0000 0000 0000
18	Data framing error	0000 2000	0000 0000 0000 0000 0010 0000 0000 0000

**Table 10. Alarm Event Codes and Hex/Binary Values**

Event Number	Text Message	Alarm Code (hex)	32-bit Binary Equivalent
18	Data framing error	0000 2000	0000 0000 0000 0000 0010 0000 0000 0000
19	<i>Reserved</i>		
20	Configuration error	0000 0800	0000 0000 0000 0000 0000 1000 0000 0000
21	Running on battery	0000 0400	0000 0000 0000 0000 0000 0100 0000 0000
22	Standby missing	0000 0200	0000 0000 0000 0000 0000 0010 0000 0000
23	Standby has alarms	0000 0100	0000 0000 0000 0000 0000 0001 0000 0000
24	Power output faults	0000 0080	0000 0000 0000 0000 0000 0000 1000 0000
25	6-Volt regulator output not in valid range	0000 0040	0000 0000 0000 0000 0000 0000 0100 0000
26	DC input power is not in valid range	0000 0020	0000 0000 0000 0000 0000 0000 0010 0000
27	LNA current fault	0000 0010	0000 0000 0000 0000 0000 0000 0001 0000
28	Total current fault	0000 0008	0000 0000 0000 0000 0000 0000 0000 1000
29	Power output control	0000 0004	0000 0000 0000 0000 0000 0000 0000 0100
30	RSSI reading below -105	0000 0002	0000 0000 0000 0000 0000 0000 0000 0010
31	Internal temperature not in valid range	0000 0001	0000 0000 0000 0000 0000 0000 0000 0001

The AMASK command is used to set or display which events cause the alarm output signal on pin 25 to be active. The default AMASK is FFFF FFFF (hexidecimal). Therefore, all major and minor alarms provide a logic high on pin 25. The first four hexidecimal values represent major alarms that provide a logic high on pin 25, and the next four hexidecimal values represent minor alarms. Converting the hexidecimal value to binary shows which bits are set in the AMASK. For example:

**AMASK (default) = FFFF FFFF (hex)**  
**=1111 1111 1111 1111 1111 1111 1111 1111 (binary)**

Each bit represents a different major or minor alarm. The most significant 16 bits represent specific major alarms and the least significant 16 bits represent specific minor alarms. All major and minor alarms are set as the default AMASK. Use the AMASK command to reset any or all of these bits if alarm outputs for specific alarms are not desired. Table 10 provides a list of event codes.

To disable the alarm signal for a specific alarm, reset the bit associated to the specific alarm and convert back to hexidecimal.

### **ASENSE [HI/LO]**

#### **Alarm Sense**

The ASENSE command sets or displays the sense of the alarm output at Pin 25 of the DATA INTERFACE connector.

Entering the ASENSE command alone shows whether the alarm output is active high or low. Entering the ASENSE command followed by HI or LO resets the alarm output to active high or low.

### **Data Interface Port Baud Rate**

## **BAUD [xxxxx abc]**

This command sets (or displays) the communication attributes for the DATA INTERFACE port. It has no effect on the RJ-11 DIAG port.

The first parameter (**xxxxx**) is baud rate. Baud rate is specified in bits-per-second (bps) and must be set to one of the following speeds: 1200, 2400, 4800, 9600, or 19200.

The second parameter of the **BAUD** command (**abc**) is a three-character block indicating how the data is encoded:

- a** = Data bits (7 or 8)
- b** = Parity (N for None, O for Odd, E for Even)
- c** = Stop bits (1 or 2)

The factory default setting is 9600 baud, 8 data bits, no parity, 1 stop bit (Example: **9600 8N1**).

---

**NOTE:** 7N1, 8O2, and 8E2 are invalid communication settings and are not supported by the transceiver.

---

## **BUFF [ON, OFF] [xxx]**

### **RX Data Buffer**

This command sets or displays the received data handling mode of the radio. The command parameter is either **ON** or **OFF**. The default is **ON**. This command affects the timing of how received RF data is sent out from the DATA INTERFACE connector. Outgoing (transmitted) data is not affected by this command.

If data buffering is **OFF**, the radio operates with the lowest possible average latency. Data bytes are thus sent out the DATA INTERFACE port as soon as an incoming RF data frame is disassembled. Average and typical latency will both be below 10 ms, but idle character gaps might be introduced into the outgoing data flow.

If data buffering is **ON**, the radio operates in Seamless Mode. Data bytes will be sent over the air as quickly as possible, but the receiver buffers (stores) the data until enough bytes have arrived to cover worst-case gaps in transmission. This mode of operation is required for protocols such as MODBUS™ that do not allow gaps in their data transmission.

Seamless Mode (**BUFF ON**) is intended only for applications where the transmitter's baud rate is greater than or equal to the receiver's baud rate. Enforcement of this rule is left to the user.

In some rare cases, the default timing parameters for Seamless Mode are not optimal. In these cases, the user might need to specify an exact delay time. To set a custom delay time, enter **BUFF xxx** (**xxx** is a value between 1 and 255). Entering **BUFF xxx** resets the default delay time.

## **C E ON-OFF**

### **Key TX Continuously**

The **C E** command enables or disables the continuously-keyed function of the radio. When **C E** is set to **ON**, the radio is continuously keyed and the Timeout Timer is disabled.

## **CTS 0-255**

### **Clear-to-Send Time**

The **CTS** (clear-to-send) command selects or displays the timer value associated with the CTS line response. The command parameter ranges from 0 to 255 ms.

For DCE operation, the timer specifies how long to wait after the RTS line goes high, before the radio asserts CTS and the DTE transmits the data. A CTS value of zero keys the radio and asserts the CTS line immediately after the RTS line goes high.

For CTS Key operation (see **DEVICE** command), the timer specifies how long to wait after asserting the CTS, before sending data out through the DATA INTERFACE port. A timer value of zero means that data is sent through the data port without imposing a key-up delay. Other delays might be present based on selected radio operating commands.

## **DATA E ON, OFF**

### **Key on Data Activity**

The **DATA E** command enables or disables the ability of the radio to key the transmitter as data is received at the DATA INTERFACE connector. Asserting RTS keys the radio regardless of this command setting.

If **DATA E** is set to **ON**, the radio will key when a full data-character is received at the transceiver's DATA INTERFACE connector. If **DATA E** is set to **OFF**, the radio needs to be keyed by asserting either the RTS or PTT signal, or with the **C E** or **E** command.

## **DEVICE DCE, CTS E**

### **Data Device Mode**

The **DEVICE** command controls or displays the device behavior of the radio. The command parameter is either **DCE** or **CTS E**.

In **DCE** mode (the default setting), CTS will go high following RTS, subject to the CTS programmable delay time. If the **DATA E** command is set to **ON**, keying can be stimulated by the input of characters at the data port. Hardware flow control is implemented by signaling the CTS line if data arrives faster than it can be buffered and transmitted.

In **CTS E** mode, the transceiver is assumed to be controlling another radio. It will still key based on the RTS line, but the CTS line is used as a keyline control for the *qy gt* radio. CTS is asserted immediately following the receipt of RF data, but data will not be sent out the DATA INTERFACE port until after the CTS programmable delay time has expired. This gives the other radio time to key.

## **DKEY**

### ***Unkey Transmitter***

This command deactivates the transmitter after it has been keyed with the **KEY** command.

## **DIN [ON/OFF]**

### ***Digital Input***

When **DIN ON** is selected, the “not” PTT line (Pin 16 on the DB-25 connector) is re-defined as a digital input for network-wide diagnostics.

See “[User-Programmable Interface Output Functions](#)” on Page 39 for more information. The default is **DIN OFF**.

To change the diagnostic link, enter **DLINK** followed by one of the following baud rates: 1200, 2400, 4800, 9600, 19200 (default).

## **DLINK [ON/OFF/xxxx]**

### ***Diagnostic Link***

Use this command to configure the local diagnostic link protocol required for network-wide diagnostics.

**DLINK ON** enables the diagnostic link. **DLINK OFF** disables the diagnostic link.

To change the diagnostic link, enter **DLINK** followed by one of the following baud rates: 1200, 2400, 4800, 9600, 19200 (default).

## **DTYPE [NODE/ROOT]**

### ***Unit's Diagnostics Type***

This command establishes the local radio as a root radio or node radio for network-wide diagnostics. Entering **DTYPE NODE** configures the radio as a node radio. Entering **DTYPE ROOT** configures the radio as a root radio. Entering the **DTYPE** command alone displays the current setting. See “[Performing Network-Wide Remote Diagnostics](#)” on Page 37.

## **DUMP**

### ***Read Current Unit Profile***

This command displays all the programmed settings. The HHT display is too small to list all the command settings at one time. Therefore, this command is most useful if the command is issued from a computer or full-screen terminal.

## **EMP [ON/OFF]**

### ***Modem TX Audio Pre-Emphasis***

This command displays or sets the TX pre-emphasis and RX De-Emphasis when the radio is operating with the analog mode and the radio's MODEM is turned off (**MODEM NONE**). It should match the other radios in the system. The use of pre- and de-emphasis helps reduce the detrimental influence of high-frequency audio noise.

## HREV

### **Hardware Revision**

This command displays the transceiver's hardware revision level. If nothing is displayed, the hardware revision level was not programmed by the factory.

## INIT

### **Initialize EEPROM Defaults**

The **INIT** command is used to re-initialize the radio's operating parameters to the factory defaults. This is helpful when trying to resolve configuration problems that might have resulted from the entry of one or more improper command settings. If you are unsure of which command setting caused the problem, this command allows you to return to a known working state. The following changes to the radio are made when **INIT** is entered:

- **CTS** is set to 0
- **DATAKEY** is set to **ON**
- **DEVICE** is set to **DCE**
- **PTT** is set to 0
- **SCD** is set to 0
- **TOT** is set to 30 seconds and set to **ON**
- **PWR** is set to +37 dBm (5 watts)

All other commands stay in the previously established setting.

## INIT [x710]

### **Packaged Model Initialization**

This command sets the transceiver for "normal" operation *outside* the P-20 chassis by setting the following parameters to the values shown below:

<b>ASENSE</b>	<b>ACTIVE HI</b>
<b>AMASK</b>	<b>FFFF FFFF</b> (assert alarm output on all alarms)
<b>RXTOT</b>	<b>NONE</b> (receive time-out timer disabled)

Use this command to restore these three parameters to the standard transceiver defaults if it was used in a P20 package.

## INIT [x720]

This command sets the transceiver for service *within* a P-20 by setting the following parameters to the values shown below:

<b>ASENSE</b>	<b>ACTIVE LO</b>
<b>AMASK</b>	<b>FFFF 0000</b> (trigger on major alarms)
<b>RXTOT</b>	<b>20</b> (20 minute time-out timer)

## KEY

**TX Key** This command activates the transmitter. See also the **DKEY** command.

## MODEL

**Model Number Code** This command displays the radio's model number code.

## MODEM [xxxx, NONE]

### **Analog/Digital Modem Selection**

This command selects the radio's modem characteristics. For digital operation, enter **9600** (WDS x710A) or **19200** (WDS x710C). For analog operation, enter **NONE**.

When the **MODEM** is set to **NONE**, the analog TX Input and RX Audio outputs of the DATA INTERFACE are used to interface with the connected external modem. These levels must match the audio signal level requirements of the external modem. See “**RXLEVEL [-20 to +6]**” on Page 30 and “**TXLEVEL [-20 to +6, AUTO]**” on Page 32 for details on setting these levels.

## OWM [XXX...]

### **Owner's Message**

Use this command to display or program an owner's message. To program the owner's message, type **OWM** then the message, followed by **ENTER**.

To display the owner's message, type **OWM** then **ENTER**. The owner's message appears on the display.

## OWN [XXX...]

### **Owner's Name**

Use this command to display or program an owner's name. To program the owner's name, type **OWN** then the name, followed by **ENTER**.

To display the owner's name, type **OWN** then **ENTER**. The owner's name appears on the display.

## PTT [0–255]

### **Push-to-Talk Delay**

Use this command to display or program the key-up delay in milliseconds.

This timer specifies how long to wait after the radio receives a key signal from either the PTT or RTS lines (on the DATA INTERFACE), before actually keying the radio.

## PWR [20–37]

### **TX RF Power Output Level**

**NOTE:** This function might not be available, depending on certification requirements in a particular country.

Use this command to display or program the desired RF forward output power setting of the radio. The **PWR** command parameter is specified in dBm and can range from 20 to 37. The default setting is 37 dBm (5 W). To read the actual (measured) power output of the radio, use the **SHOW PWR** command. A dBm-to-watts conversion chart is provided in Section 6.7 (Page 43).

## **RSSI**

### ***Received Signal Strength Indicator***

This command continuously displays the radio's Received Signal Strength Indication (RSSI) in dBm units, until you press the **ENTER** key. You can read incoming signal strengths from -50 dBm to -120 dBm.

---

**NOTE:** The RSSI samples the incoming signal for 1 to 2 sec before providing an average reading to your computer terminal or HHT.

---

## **RTU [ON/OFF/0-80]**

### ***RTU Simulator***

This command enables or disables the radio's internal RTU simulator, which runs with proprietary polling programs (poll.exe and rsim.exe). The internal RTU simulator is available whenever diagnostics is enabled in a radio. This command also sets the RTU address to which the radio will respond.

Use the internal RTU for testing system payload data or pseudo bit error rate testing. It can be helpful in isolating a problem to either the external RTU or the radio.

Use the RTU simulator in a polled environment for testing purposes. See *Publication 05-3467A01* for more information.

## **RX [xxx.xxxx]**

### ***Receive Frequency***

This command selects or displays the radio's receive frequency in MHz. The frequency step size is 6.25 kHz. Some models might be set to 5 kHz steps to match the frequencies of some band plans.

If the customer frequency is not programmed at the factory, a default frequency is programmed in the radio near the center of the frequency band.

---

**NOTE:** A large change in receive frequency (more than 5 MHz) requires adjustment of the receiver helical filters for maximum performance and RSSI. See *Section 6.2, Helical Filter Adjustment* (Page 36) for details.

---

## **RXLEVEL [-20 to +6]**

### ***RX Audio Output Level***

The **RXLEVEL** command selects or displays the receive output level present on Pin 11 of the DATA INTERFACE's DB-25 connector. Use this function in **MODEM NONE** mode with analog audio.

## **RXTOT [NONE, 1-1440]**

### ***Loss of RX Data Alarm Time***

The **RXTOT** command selects or displays the receive time-out timer value in minutes. This timer triggers an alarm (event 12) if data is not detected within the specified time.

Entering the **RXTOT** command without a parameter displays the timer value in minutes. Entering the **RXTOT** command with a parameter ranging from 0 to 255 resets the timer in minutes. Entering the **RXTOT** command with the parameter **NONE** disables the timer.

## **SCD [0-255]**

### ***Soft-Carrier Dekey***

This command displays or changes the soft-carrier dekey delay in milliseconds.

This timer specifies how long to wait after the removal of the keying signal before actually releasing the transmitter. A value of 0 ms unkeys the transmitter immediately after the removal of the keying signal.

## **SER**

### ***Radio's Serial Number***

This command displays the radio's serial number as recorded at the factory.

## **SHOW [DC, PORT, PWR]**

### ***Show Power Settings***

The **SHOW** command displays different types of information based on the command variables. The different parameters are:

- **DC**—Display DC input/output voltages
- **PORT**—Display the connector port (RJ-11 or DB-25) that is active for diagnostics and control.
- **PWR**—Display RF power output

## **SNR**

### ***RX Signal-to-Noise Ratio***

This command continuously displays the signal-to-noise (SNR) ratio of the received signal expressed in dB, until you press the **ENTER** key. As used in this guide, the SNR measurement is based upon the signal level following equalization for received frames.

The SNR is an indication of the received signal quality. The SNR indication ranges from 10 dB to 33 dB. A value of 10 dB represents a very poor signal. A value of 24 dB represents a very good signal.

Using the SNR command causes the DIAG port to enter an update mode, and the SNR is updated and redisplayed every 2 sec. The SNR continuously updates until you press the **ENTER** key.

### **SREV**

#### ***Software/Firmware Revision Level***

This command displays the software revision level of the transceiver firmware.

### **STAT**

#### ***Alarm Status***

This command displays the current alarm status of the transceiver.

If no alarms exist, the message **NO ALARMS PRESENT** appears at the top of the HHT display.

If an alarm does exist, a two-digit code (00–31) is displayed and the alarm is identified as “Major” or “Minor.” A brief description of the alarm code is also provided.

If more than one alarm exists, the word **MORE** appears at the bottom of the screen and additional alarms are viewed by pressing the **ENTER** key. Detailed descriptions of event codes are provided in [Table 11 on Page 34](#).

### **TEMP**

#### ***Internal Temperature***

This command displays the internal temperature of the transceiver in degrees Celsius.

### **TOT [1-255, ON, OFF]**

#### ***TX Timeout-Timer***

This command sets or displays the transmitter Time-out Timer value (1–255 sec), as well as the timer status (**ON** or **OFF**). If the timer is on, and the radio remains keyed for a longer duration than the **TOT** value, the transmitter is automatically unkeyed.

When this happens, you must command the radio back to an unkeyed state before a new keying command is accepted. The default timer value is 30 sec.

### **TX [xxx.xxxx]**

#### ***TX Frequency***

This command selects or displays the radio’s transmit frequency in MHz. The frequency step size is 6.25 kHz.

If the customer frequency is not programmed at the factory, a default frequency is programmed in the radio near the center of the frequency band.

## **TXLEVEL [-20 to +6, AUTO]**

### ***TX Audio Input Level***

The **TXLEVEL** command selects or displays the transmit audio input level expected on Pin 9 of the DATA INTERFACE's DB-25 connector from an external modem present on Pin 11 of the DATA INTERFACE's DB-25 connector. This function is used in **MODEM NONE** mode with analog audio.

For optimum performance, set this command to match the external modem level. For example, **TXLEVEL -10**. **TXLEVEL AUTO** also available. This setting directly affects the TX Deviation. (Default: -10 dBm).

## **UNIT [10000...65000]**

### ***Unit Address***

The unit address is the radio's unique identity for the network's diagnostic activities. The default number is programmed by the factory to the last four digits of the serial number.

## **5.0 TROUBLESHOOTING**

Successful troubleshooting of the radio system is not difficult, but it requires a logical approach. It is best to begin troubleshooting at the master station, as the rest of the system depends on the master for polling commands. If the master station has problems, the operation of the entire network can be compromised.

It is good practice to start by checking the simple things. For proper operation, all radios in the network must meet these basic requirements:

- Adequate and stable primary power. The radio contains an internal self-resetting fuse (4A). Remove primary power to reset.
- Secure connections (RF, data and power)
- An efficient and properly aligned antenna system with a good received signal strength of at least -90 dBm (it is possible for a system to operate with weaker signals, but reliability will be degraded).
- Proper programming of the transceiver's operating parameters (see *Section 4.0, TRANSCIEVER PROGRAMMING* on Page 15).
- The correct interface between the transceiver and the connected data equipment (correct cable wiring, proper data format, timing, and so on).

### **5.1 LED Indicators**

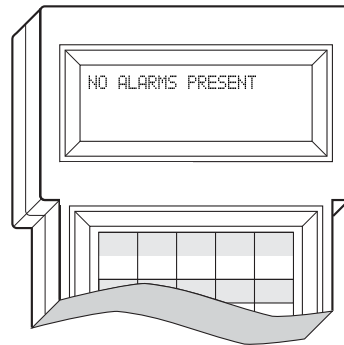
The LED status indicators are an important troubleshooting tool and should be checked whenever a problem is suspected. [Table 7 on Page 14](#) describes the function of each status LED.

## 5.2 Event Codes

When an alarm condition exists, the transceiver creates a code that can be read on an HHT connected to the DIAG port. These codes can help resolve many system difficulties. Refer to [Table 11 \(Page 34\)](#) for a definition of the event codes.

### Checking for Alarms—*STAT* command

To check for alarms, enter **STAT** on the HHT. If no alarms exist, the message **NO ALARMS PRESENT** appears at the top of the display ([Figure 11](#)).



**Figure 11. HHT Display in Response to STAT Command**

If an alarm does exist, a two-digit alarm code (00–31) is displayed and the event is identified as a Major or Minor Alarm. A brief description of the alarm is also provided.

If more than one alarm exists, the word **MORE** appears at the bottom of the screen. To view additional alarms, press **ENTER**.

### Major Alarms vs. Minor Alarms

**Major Alarms**—report serious conditions that generally indicate a hardware failure, or other abnormal condition that prevents (or seriously hampers) further operation of the transceiver. Major alarms generally indicate the need for factory repair. Contact us for further assistance.

**Minor Alarms**—report conditions that, under most circumstances, do not prevent transceiver operation. This includes out-of-tolerance conditions, baud rate mismatches, and so on. The cause of these alarms should be investigated and corrected to prevent system failure.

## Event Code Definitions

Table 11 contains a listing of all event codes reported by the transceiver.

**Table 11. Event Codes**

Event Code	Event Class	Description
01	Major	Improper software detected for this radio model.
02	Major	The model number of the transceiver is unprogrammed.
04	Major	One or both of the internal programmable synthesizer loops is reporting an out-of-lock condition.
06	Major	An unrecoverable fault was detected on the auto-D chip. The radio will not receive data.
07	Major	One or more of the radio's internal voltage regulators is reporting a failure. The radio will not operate.
08	Major	The system is reporting that it has not been calibrated. Factory calibration is required for proper radio operation.
09	--	Not used.
10	Major	The internal microcontroller was unable to properly program the system to the appropriate EEPROM defaults. A hardware problem might exist.
11	--	Not used.
12	Major	Receiver time-out. No data received within the specified receiver time-out time.
13–15	--	Not used.
16	Minor	Not used.
17	Minor	A data parity fault is detected on the DATA INTERFACE connector. This usually indicates a parity setting mismatch between the radio and the RTU.
18	Minor	A data framing error is detected on the DATA INTERFACE connector. This can indicate a baud rate mismatch between the radio and the RTU.
19–24	--	Not used.
25	Minor	The 5.6 V power regulator is out-of-tolerance. If the error is excessive, operation might fail.
26	Minor	The DC input voltage is out of tolerance. If the voltage is too far out of tolerance, operation might fail.
27, 28	--	Not used.
31	Minor	The transceiver's internal temperature is approaching an out-of-tolerance condition. If the temperature drifts outside of the recommended operating range, operation might fail.

## 6.0 TECHNICAL REFERENCE

### 6.1 1710A/C, 2710A/C, 4710A/C, 9710A/C Transceiver Specifications

#### GENERAL

---

Frequency Range*:	<b>1710A/C</b> 130-174MHz	<b>2710A/C</b> 220-240MHz	<b>4710A/C</b> 330–512MHz	<b>9710A/C</b> 800–960 MHz
	* with one or more sub-bands as permitted by regulatory agencies: 1710: 130-150MHz, 150-174MHz 4710: 330-350MHz, 350-370MHz, 370-400MHz, 400-430MHz, 430-450MHz, 450-480MHz, 480-512MHz 9710: 800-860MHz, 860-900MHz, 900-960MHz			
Frequency Stability	±1.0 ppm			

#### RECEIVER

---

Maximum Usable Sensitivity:	x710A: –110 dBm at $1 \times 10^{-6}$ BER x710C: –105 dBm at $1 \times 10^{-6}$ BER
Co-Channel Rejection:	x710A: –12 dB x710C: –18 dB
Adjacent-Channel Selectivity:	60 dB
Spurious-Response Rejection:	70 dB
Intermodulation Response Rejection:	65 dB
Spurious Conducted Emissions:	–57 dBm (9 kHz to 1 GHz) –47 dBm (1 GHz to 12.75 GHz)
Bandwidth:	x710A: 12.5 kHz x710C: 25 kHz

#### TRANSMITTER

---

Modulation Type:	Binary CPFSK
Carrier Power:	0.1 W to 5 W, 5W to 25W
Carrier Power Accuracy:	±1.5 dB
Transmit Attack Time:	5 ms maximum
Transmit Release Time:	5 ms maximum
Duty Cycle:	Continuous
Output Impedance:	50 Ω
Frequency Stability:	±1.0 ppm
Channel Spacing:	x710A: 12.5 kHz x710C: 25 kHz
Adjacent Channel	
Transient Power:	x710A: –50 dBc
Transmitter Spurious Conducted Emissions:	–36 dBm [73 dBc], 9 kHz to 1 GHz –30 dBm [67 dBc], 1 GHz to 12.5 GHz
Standby:	–57 dBm, 9 kHz to 1 GHz –47 dBm, 1 GHz to 12.5 GHz
Intermodulation:	–40 dBc
Time-Out Timer:	30 sec (Default), User selectable
Transmitter Keying:	Data activated, or RTS

FCC Identifiers: E5MDS9710N (928–960 MHz)  
E5MDS9710N-1 (806–940 MHz)  
E5MDS4710 (403–512 MHz)

## DATA CHARACTERISTICS

---

Signaling Type: EIA/RS-232/485; DB-25 Female connector  
Connector: DB-25 Female  
Data Interface Rates: 110 bps to 38.4 kbps 1200, 2400, 4800, 9600, 19200, 38400 bps—asynchronous  
Data Latency: 10 ms maximum, including RTS/CTS delay  
Byte Length: 10 or 11 bits

## PRIMARY POWER

---

Voltage 13.8 Vdc Nominal (10.5 to 16 Vdc)  
Negative-Ground Systems Only  
TX Supply Current: 2.5 A (Maximum) @ 5 W RF Output  
5 A (Maximum) @ 25 W RF Output  
RX Supply Current: *Operational*—125 mA, Nominal  
*Standby (sleep)*—15 mA, Nominal  
Power Connector: 2-pin polarized & locking connector  
Fuse: 5 A Thermal Fuse, Self-Resetting, Internal  
(Remove primary power to reset)

## ENVIRONMENTAL

---

Humidity: 95% at 40 degrees C (104°F), non-condensing  
Temperature Range: –40 to 70 degrees C (–40°F to +158°F)  
Size: 18.4x14.3x5.1cm  
2.5x11.9x15.8cm  
Weight: 1000g, 148g  
Case: Die-cast Aluminum

## DIAGNOSTICS INTERFACE

---

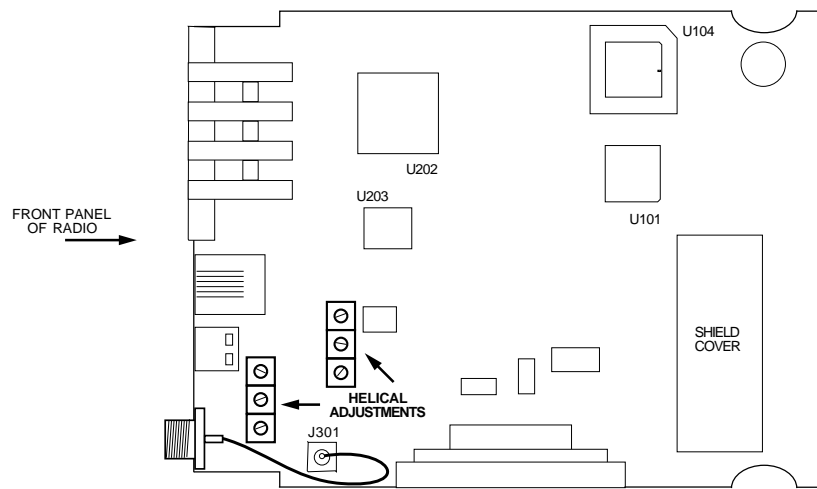
Signalling Standard: RS-232  
Connector: DIAG—RJ-11 (Dedicated)  
DATA INTERFACE—DB-25  
(Alternate, See [“Performing Network-Wide Remote Diagnostics” on Page 37](#))  
I/O Devices: MDS Hand-Held Terminal,  
PC with MDS software,  
or other Terminal Communications program.

## 6.2 Helical Filter Adjustment

If the frequency of the radio is changed more than 5 MHz, adjust the helical filters for maximum received signal strength (RSSI) as follows:

1. Remove the top cover from the transceiver by loosening the four screws and lifting straight up.
2. Locate the helical filters on the PC board. See [Figure 12 on Page 37](#).
3. Apply a steady signal to the radio at the programmed receive frequency (–80 dBm level recommended; no stronger than –60 dBm). This can be done with a signal generator or an over-the-air signal.

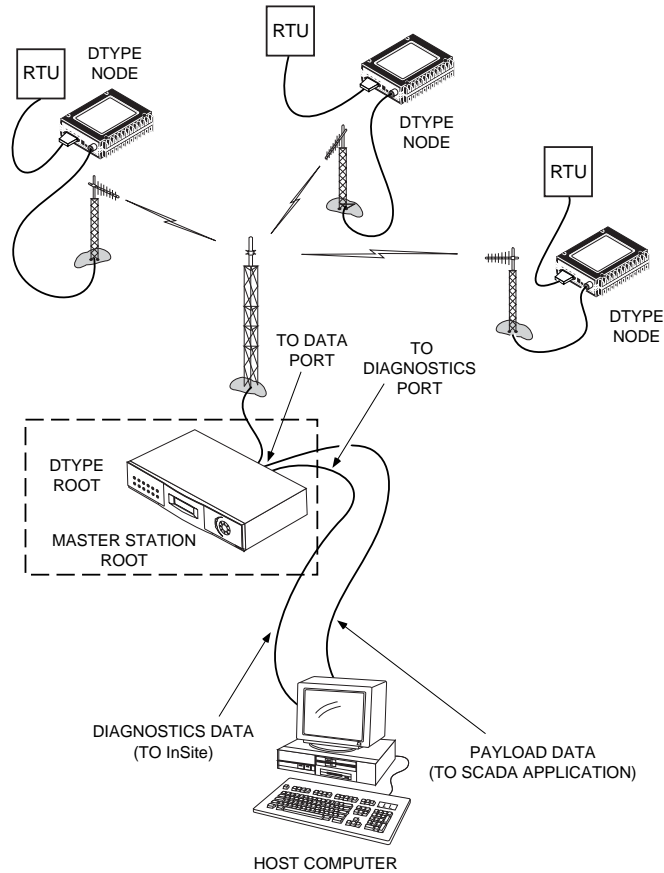
4. Measure the radio's RSSI using one of the following methods:
  - With an HHT or PC (see *Section 4.0, TRANSCIVER PROGRAMMING* on Page 15).
  - With MDS Radio Configuration Software (see *Section 6.5, Upgrading the Radio's Software* on Page 40).
  - With a voltmeter connected to Pin 21 of the DATA INTERFACE connector (See *Section 3.2, RSSI Measurement* on Page 14).
5. With a non-metallic adjustment tool, adjust each section of the helical filters for maximum RSSI. Re-install the cover to the transceiver.



**Figure 12. Helical Filter Locations**

### 6.3 Performing Network-Wide Remote Diagnostics

Diagnostics data from a remote radio can be obtained by connecting a laptop or personal computer running InSite NMS software to any radio in the network. [Figure 13](#) shows an example of a setup for performing network-wide remote diagnostics.



**Figure 13. Network-Wide Remote Diagnostics Setup**

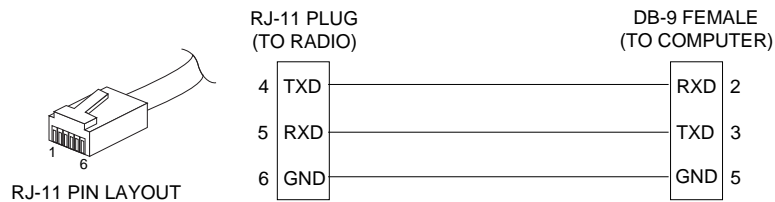
If a PC is connected to any radio in the network, you can perform intrusive polling (polling that briefly interrupts payload data transmission). To perform diagnostics without interrupting payload data transmission, connect the PC to a radio defined as the “root” radio. A radio is defined as a root radio using the **DTYPE ROOT** command at the radio.

A complete explanation of remote diagnostics can be found in *Network-Wide Diagnostics System Handbook*. See the handbook for more information about the basic diagnostic procedures outlined below.

1. Program one radio in the network as the root radio by entering the **DTYPE ROOT** command at the radio.
2. At the root radio, use the **DLINK ON** and **DLINK [baud rate]** commands to configure the diagnostic link protocol on the RJ-11 port.
3. Program all other radios in the network as nodes by entering the **DTYPE NODE** command at each radio.

4. Use the **DLINK ON** and **DLINK [baud rate]** commands to configure the diagnostic link protocol on the RJ-11 port of each node radio.
5. Connect same-site radios using a null-modem cable at the radios' diagnostic ports.
6. Connect a PC with InSite software installed to the root radio, or to one of the nodes, at the radio's DIAG port (this PC can also be the PC used to collect payload data, as shown in Figure 13).

To connect a PC to the radio's DIAG port, an RJ-11-to-DB-9 adapter (P/N 03-3246A01) is required. If desired, an adapter cable can be made using the information shown in Figure 14.



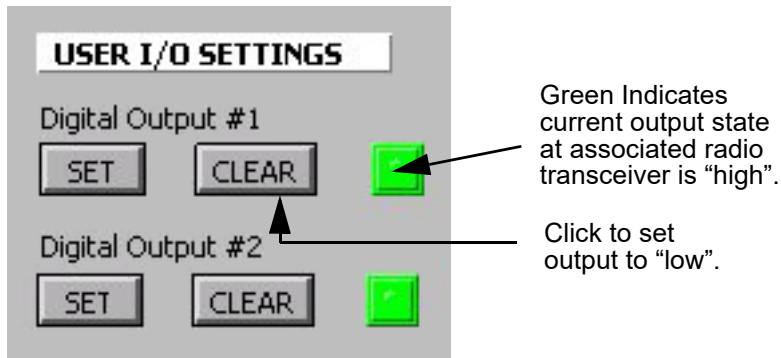
**Figure 14. RJ-11 to DB-9 Adapter Cable**

7. Start the InSite application at the PC (see the *InSite User's Guide* for instructions).

## 6.4 User-Programmable Interface Output Functions

You can manually activate two pins of the DATA INTERFACE using MDS' InSite NMS software. These two outputs (#1–Pin 22 and #2–Pin 15) can be connected to compatible user-provided data devices. The pins provide either a logic high or low depending on the last command from the **USER I/O SETTINGS** in the **Network Wide Radio Configuration** screen of InSite. In this InSite window, clicking the **SET** button sets the output to high, and clicking on **CLEAR** sets the output to low. Figure 15 shows the software controls.

One pin on the **DATA INTERFACE** can be configured as a digital input. If **DIN ON** is selected, Pin 16 becomes a digital input. The input is set when 5 V is applied, and clear when grounded. The same physical input can be queried as the analog input value on other InSite screens.



**Figure 15. MDS InSite Radio Device User I/O Settings**  
*(Bottom Left-hand Corner of Network Wide Radio Configuration Screen)*

These output-only pins are designed for low switching rates and do not pass high-speed data, nor are they suitable for latency-sensitive remote controls. An example of this function is to reset the connected remote RTU or turn on a security device at the associated transceiver’s location.

**Table 12. User-Programmable Interface Output Functions**  
*using Transceiver Interface Port*

Function	Interface Pin	States*	Compatibility
Digital Output #1	Pin 22	Set = 3 V Clear = 0 V	CMOS
Digital Output #2	Pin 15	Set = +9.5 V Clear = -9.5 V	EIA-232 Compatible
Digital Input	Pin 16	Set = 5 V Clear = 0 V	CMOS

\* Voltages are typical and vary with load.

## 6.5 Upgrading the Radio’s Software

Windows-based Radio Configuration software is available ( P/N 03-3156A01) for upgrading the internal radio software when new features become available from us. Contact us for ordering information, or download new radio software from [www.gemds.com](http://www.gemds.com).

To connect a PC to the radio’s DIAG port, an RJ-11 to DB-9 adapter ( P/N 03-3246A01) is required. If desired, an adapter cable can be made using the information shown in [Figure 14](#).

Using the Radio Configuration software, select **RADIO SOFTWARE UPGRADE** under the **SYSTEM** menu. Follow the prompts and online instructions to determine how to proceed.

Software upgrades are distributed as ASCII files with an “.S28” extension. These files use the Motorola S-record format. When the download is activated, the radio’s PWR LED flashes rapidly to confirm that a download is in process. The download takes approximately 2 min.

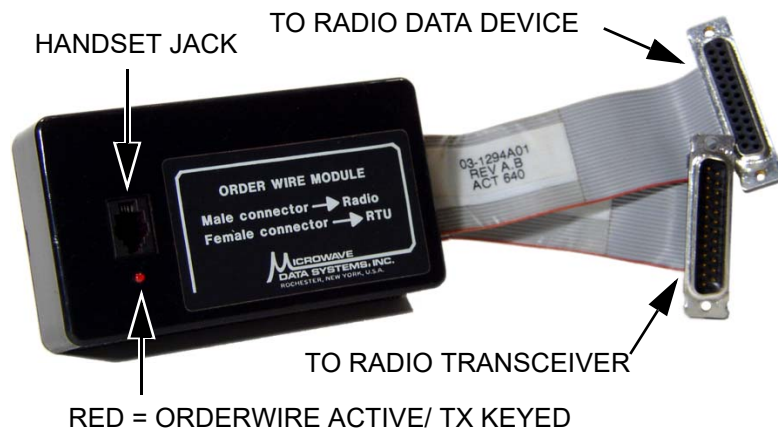
---

**NOTE:** If a download fails, the radio is left unprogrammed and inoperative. This is indicated by the PWR LED flashing slowly (1 sec on/1 sec off). This condition is only likely if there is a power failure to the computer or radio during the downloading process. The download can be attempted again when the fault is corrected.

---

## 6.6 External Orderwire Module

During installation or troubleshooting activities, it is desirable to communicate by voice between personnel at the Master Station and the Remote Station sites to coordinate their activities. An optional external orderwire module from (P/N 12-1297A01) is available that can be inserted between the radio’s DATA INTERFACE and the user’s data communication device.



**Figure 16. Orderwire Adapter Module**  
(P/N 12-1307A01)

### Installation

Install the Orderwire (O/W) Module between the radio transceiver’s DATA INTERFACE connector and the connected device. A handset should also be connected to the associated Master Station’s orderwire jack.

The payload data exchanges pass through the Orderwire Module uninterrupted until the Orderwire Module is in use. The module has a voice-operated switch (VOX) that keys the connected transceiver whenever audio is picked up by a handset plugged into the RJ-11 phone jack. Any standard telephone handset can be used, or a rugged handset (P/N

12-1307A01 without PTT; 12-1307A01 with PTT) can be purchased from us. Handsets must have carbon microphone elements installed. Dynamic microphones do not work with the module. Handsets with a push-to-talk (PTT) button are supported and recommended, as background noise can activate the VOX circuit and interrupt the payload data.

### **Operation**

To operate the orderwire, activate the handset (PTT or VOX). This keys the transmitter and passes the audio over the network to the handset of the Master Station. Only one person can speak at a time (simplex). In noisy locations, it might be necessary to cover the handset mouthpiece to prevent accidental keying of the transmitter.

---

**NOTE:** When the transmitter is keyed by the orderwire operation, normal payload data is interrupted.

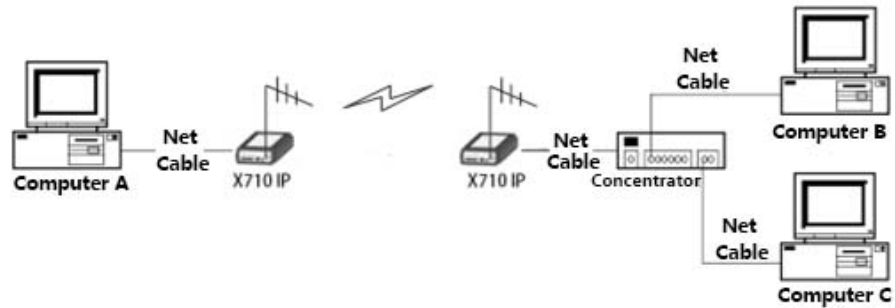
Be sure to disconnect the module or handset to restore normal data communications.

---



## 7.0WDSx710 IP Series Instructions for Use

WDSx710IP series adds the function of Ethernet interface data transmission and reception, and the function is implemented as follow



### 7.1 Data transmission radio based on adding serial port gateway

No need for other more operations, only need the terminal equipment to connect to the Ethernet port to carry out network port transparent transmission, the recommended number of bits transmitted per unit time in this mode  $\leq 1/4$  of the bit rate of X710C series radio, such as 19.2kbps. The data throughput in this mode should be  $\leq 4.8$ Kbps.

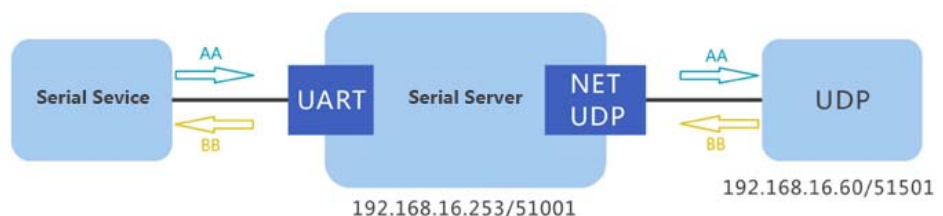
### 7.2 Data radio stations based on adding serial port servers

Supports standard TCP/IP interfaces, supports common TCP/UDP operating modes, and needs to be configured through a web browser. The recommended number of bits transmitted per unit time in this mode  $\leq$  the bit rate of X710C series radio, such as 19.2kbps. The data throughput in this mode should  $< 19.2$ Kbps.

#### 7.2.1 UDP mode

The working mode of the serial device server defaults to UDP mode, and TCP, Modbus RTU/ASCII Master, Modbus RTU/ASCII Slave, Modbus Over TCP, Pair Connection Master, Pair Connection Slave, RealCOM\_MW and other working modes are optional. The following is the debugging process for UDP mode.

##### 7.2.1.1 UDP Mode Application Topology



In this scenario:

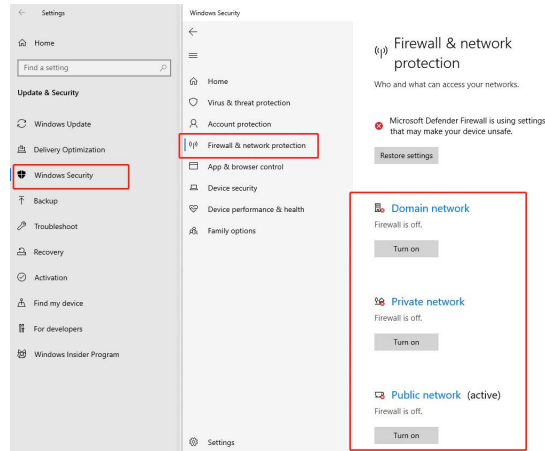
The user's serial device connects to the serial port of the serial device server.

The PC or device on the network side works in UDP mode.

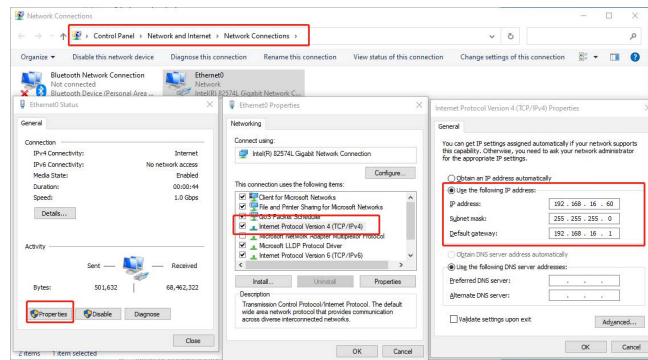
The serial device server works in UDP mode and completes the mutual forwarding of data between the two.

### 7.2.1.2 Configuration Process

#### ① Turn off the computer firewall



#### ② The computer adds the IP of the same network segment as the serial device server, and the default IP of the device factory is 192.168.16.253



#### ③ The computer directly connects to the serial port server through the network cable and observes whether the computer can ping the serial port server

```
CMD.exe
Microsoft Windows [Version 10.0.19044.1889]
(c) Microsoft Corporation
C:\Users\lenovo>ping 192.168.16.253 -t

Pinging 192.168.16.253 with 32 bytes of data:
Reply from 192.168.16.253: bytes=32 time<1ms TTL=255
Reply from 192.168.16.253: bytes=32 time<1ms TTL=255
Reply from 192.168.16.253: bytes=32 time<1ms TTL=255
Reply from 192.168.16.253: bytes=32 time<1ms TTL=255
Reply from 192.168.16.253: bytes=32 time<1ms TTL=255
Reply from 192.168.16.253: bytes=32 time<1ms TTL=255
Reply from 192.168.16.253: bytes=32 time<1ms TTL=255
Reply from 192.168.16.253: bytes=32 time<1ms TTL=255
Reply from 192.168.16.253: bytes=32 time<1ms TTL=255
Reply from 192.168.16.253: bytes=32 time<1ms TTL=255
Reply from 192.168.16.253: bytes=32 time=2ms TTL=255
Reply from 192.168.16.253: bytes=32 time<1ms TTL=255
Reply from 192.168.16.253: bytes=32 time<1ms TTL=255
Reply from 192.168.16.253: bytes=32 time<1ms TTL=255
Reply from 192.168.16.253: bytes=32 time<1ms TTL=255
Reply from 192.168.16.253: bytes=32 time<1ms TTL=255
```

④ Enter the IP address of the serial device server in the browser, enter the user name and password to log in, and the initial user name and password are admin.

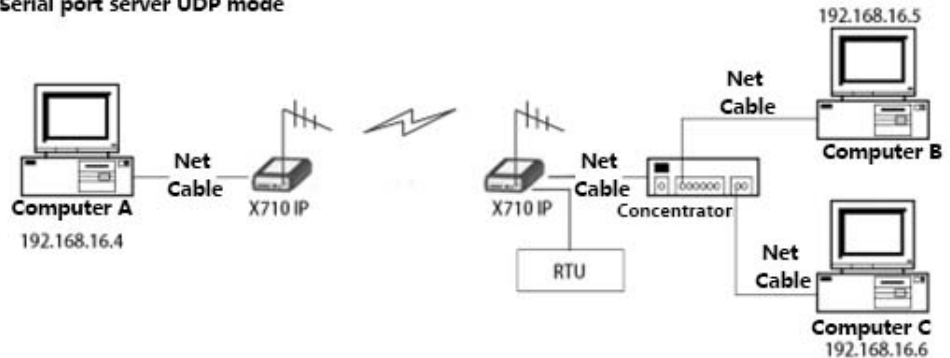
⑤ Configure parameters, enter the web interface, click Serial Port Configuration, and configure relevant parameters according to the actual situation.

Serial port number: COM1;  
 Serial port working mode: RS485/RS422/RS232;  
 Baud rate 9600 (will be configured according to the baud rate of factory radio equipment);  
 The network working mode is UDP; The destination address is 192.168.16.60 (Ethernet port signal output device IP),  
 Destination port 51002;  
 The address of the serial port server is 192.168.16.253,  
 Local port 51001. Everything else is the default configuration

Serial ethernet server configuration				
Serial port No.	COM1 <input checked="" type="radio"/> enable <input type="radio"/> disable			
Large traffic transmission	<input checked="" type="radio"/> enable <input type="radio"/> disable			
Serial port parameters				
Serial Mode	RS485/RS422/RS232			
BaudRate	9600			
DataBits	8			
StopBit	1			
ParityBit	none			
PackinLength	800 (0-1460)			
PackingInterval	80 (0-255)ms			
Frame head & tail mode	<input type="radio"/> enable <input checked="" type="radio"/> disable			
Start byte	0x0 (HEX:0x00-0xff)			
End byte	0xff (HEX:0x00-0xff)			
Regpacket Function	Disable			
Regpacket Content	72856770616386574 <input checked="" type="radio"/> HEX <input type="radio"/> ASCII			
Heartbeat Function	Disable			
Heartbeat Content	68666172746266174 <input checked="" type="radio"/> HEX <input type="radio"/> ASCII			
Heartbeat Interval	30 (1-65535)s			
Network parameter				
Working mode	UDP			
Local port	51001 (1-65535)			
Number of network connections				
<input checked="" type="checkbox"/>	Destination address1	192.168.16.60	Destination port	51001 (1-65535)
<input type="checkbox"/>	Destination address2	192.168.30.140	Destination port	51502 (1-65535)

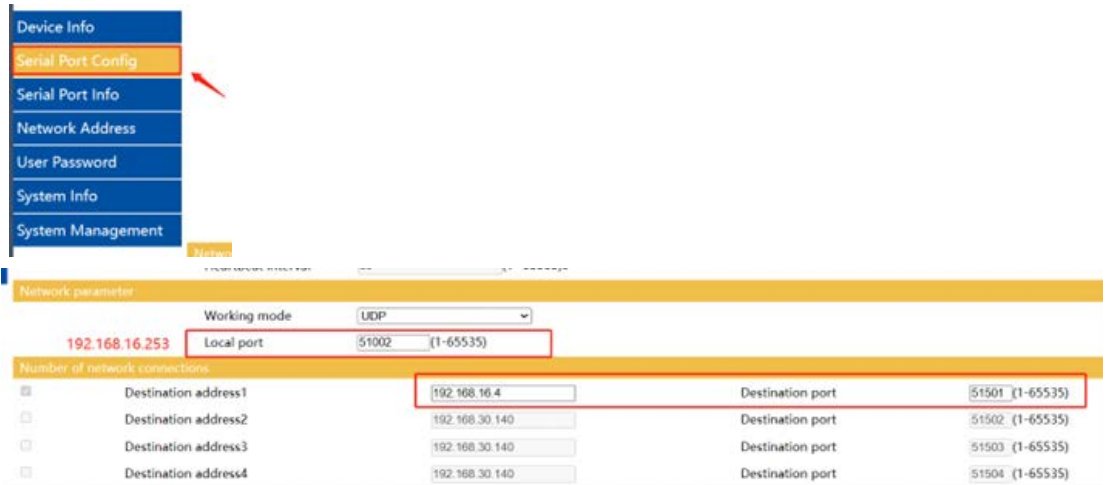
### ⑥ UDP debugging example

Serial port server UDP mode



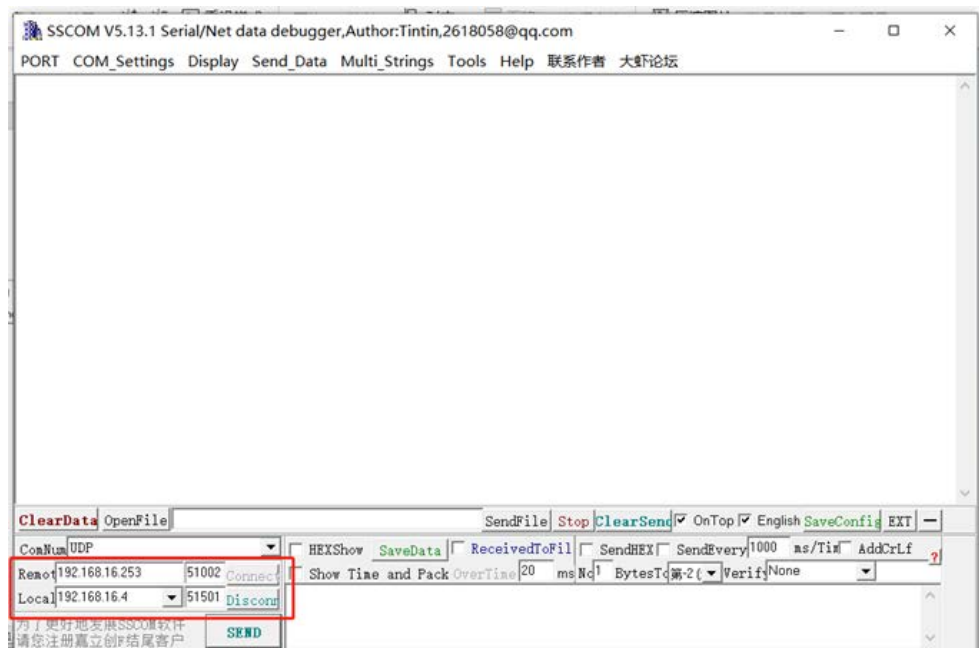
If you send a UDP packet from computer A to computer B through the SSCOM serial port & network debugging tool:

First, enter 192.168.16.253 (configurable) through the browser to enter the serial device server management page of the two X710 IP stations connected to computer A and computer B respectively



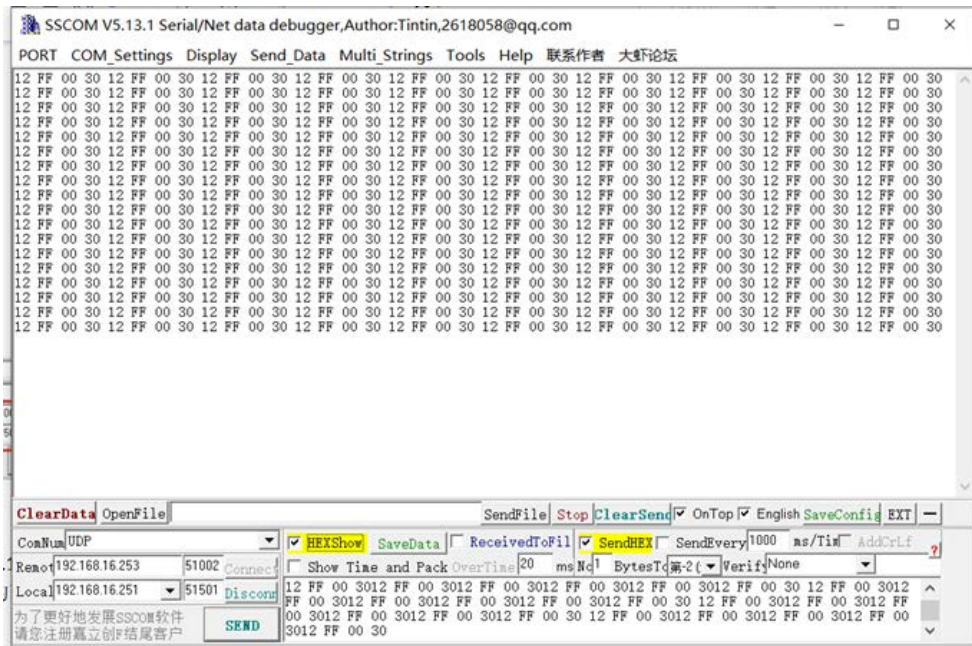
Enter the IP address and port consistent with the above figure in the lower left corner of SSCOM Serial Port & Network Debugging Tool

The remote port in the PC test tool corresponds to the local port of the serial device server  
Local port in PC test tool Corresponding to the remote port of the serial device server



Computer A (IP: 192.168.16.5) After successful setup, use the same steps to set Computer B (IP: 192.168.16.5),

After the settings are completed, UDP data can be sent and received in both directions, and the connectivity of the link can be successfully verified.



## ***IN CASE OF DIFFICULTY...***

---

Our products are designed for long life and trouble-free operation. However, this equipment, as with all electronic equipment, may have an occasional component failure. The following information will assist you in the event that servicing becomes necessary.

### **TECHNICAL ASSISTANCE**

---

Technical assistance for our products is available from our Technical Support Department during business hours (8:30 A.M.–5:30 P.M. Beijing Time). When calling, please give the complete model number of the radio, along with a description of the trouble/symptom(s) that you are experiencing. In many cases, problems can be resolved over the telephone, without the need for returning the unit to the factory. Please use one of the following means for product assistance:

Phone: (86) 755-83849417 E-Mail: [sales2@sinosun.cn](mailto:sales2@sinosun.cn)

FAX: (86) 755-83849434 Web: [www.sinosun.cn](http://www.sinosun.cn)

### **FACTORY SERVICE**

---

Component level repair of this equipment is not recommended in the field. Many components are installed using surface mount technology, which requires specialized training and equipment for proper servicing. For this reason, the equipment should be returned to the factory for any PC board repairs. The factory is best equipped to diagnose, repair and align your radio to its proper operating specifications.

If return of the equipment is necessary, you must obtain a Service Request Order (SRO) number. This number helps expedite the repair so that the equipment can be repaired and returned to you as quickly as possible. Please be sure to include the SRO number on the outside of the shipping box, and on any correspondence relating to the repair. No equipment will be accepted for repair without an SRO number.

SRO numbers are issued online at [www.sinosun.cn](http://www.sinosun.cn). Your number will be issued immediately after the required information is entered. Please be sure to have the model number(s), serial number(s), detailed reason for return, "ship to" address, "bill to" address, and contact name, phone number, and fax number available when requesting an SRO number. A purchase order number or pre-payment will be required for any units that are out of warranty, or for product conversion.

If you prefer, you may contact our Product Services department to obtain an SRO number:

Phone Number: (86)755-83849417

Fax Number: (86)755-83849434

E-mail Address: [sales2@sinosun.cn](mailto:sales2@sinosun.cn)

The radio must be properly packed for return to the factory. The original shipping container and packaging materials should be used whenever possible. All factory returns should be addressed to:

Shenzhen Sinosun Technology Co., Inc.  
Customer Service Department

3A17, South Plaza Cangsong Building, Tairan Industry & Trade Zone  
Futian District, Shenzhen, Guangdong, China

When repairs have been completed, the equipment will be returned to you by the same shipping method used to send it to the factory. Please specify if you wish to make different shipping arrangements. To inquire about an in-process repair, you may contact our Product Services Group using the telephone, Fax, or E-mail information given above.

Digital Signal Processing—See DSP. 44

Display

- alarm status (STAT command) 31
- alarm triggers (AMASK command) 21
- all programmed settings (DUMP command) 26
- baud rate and encoding (BAUD command) 24
- connector port, active (SHOW command) 30
- CTS line response timer (CTS command) 25
- data handling mode (BUFF command) 24
- DC voltage (SHOW command) 30
- hardware revision level (HREV command) 27
- key-up delay (PTT command) 28
- model number code (MODEL command) 28
- owner's message (OWM command) 28
- owner's name (OWN command) 28
- radio behavior (DEVICE command) 25
- radio serial number (SER command) 30
- receive frequency (RX command) 29
- receive time-out timer value (RXTOT command) 30, 32
- RF forward output power (PWR command) 28
- RF output (SHOW command) 30
- RSSI (RSSI command) 29
- signal-to-noise ratio (SNR command) 30
- soft-carrier dekey delay (SCD command) 30
- software revision level (SREV command) 31
- temperature, internal (TEMP command) 31
- time-out value and timer status (TOT command) 31
- transmit frequency (TX command) 31

DKEY command 26

DLINK command 26

- use of 38

Downloading new software 40

DSP (Digital Signal Processing), defined 45

DSR pinout (Pin 6) 11

DTE (Data Terminal Equipment), defined 45

DTYPE command 26

- use of 38

DUMP command 26

**E**

Earth Ground 10

EEPROM FAILURE error message 19

EMP command 26

Enable/disable

- continuous keying (CKEY command) 25
- diagnostic channel, pinout (Pin 23) 12
- internal RTU (RTU command) 29
- network-wide diagnostics (DLINK command) 26
- network-wide diagnostics, procedures 38

Environment specifications 36

Equalization, defined 45

Error Messages 19

Error messages 19

- access denied 19
- command failed 19
- EEPROM failure 19
- incorrect entry 19
- not available 19
- not programmed 19
- text too long 19
- unknown command 19

Event Codes 33

- Definitions 34

**F**

Fade margin, defined 45

Feedlines 9

Filter, helical, adjustment 36

Frame, defined 45

Frequency

- adjusting helical filter when changed 36
- setting. See TX and RX commands

## G

Glossary 44

Ground

- on Pin 12 to enable Sleep mode 11
- protective (Pin 1) 11
- signal (Pin 7) 11

## H

Half-duplex 3

- switched carrier operation 3

Hand-Held Terminal (HHT) 5

- connected to transceiver, illustrated 16
- connection and startup 15
- display in response to STAT command, illustrated 33
- entering commands 17
- error messages displayed on 19
- keyboard commands 17
- operational settings, table 17
- reinitialization display, illustrated 16
- reinitializing 16
- Setup 16

Hardware flow control, defined 45

Helical filter

- adjusting 36
- illustration 37

Host computer, defined 45

HREV command 27

## I

Illustrations

- antenna, Yagi 9
- Hand-Held Terminal (HHT) connected to transceiver 16
- Hand-Held Terminal (HHT) reinitialization display 16
- Hand-Held Terminal display in response to STAT command 33
- helical filter locations 37
- MAS network 2
- network-wide diagnostics 38
- point-to-point link 3
- remote station arrangement 6
- RJ-11 to DB-9 adapter cable 39, 40
- RSSI vs. V<sub>dc</sub> 12, 15
- transceiver connectors & indicators 1
- transceiver mounting dimensions 8

INCORRECT ENTRY error message 19

INIT command 27

INIT xx10 command 27

INIT xx20 command 27

InSite software

- using to perform remote diagnostics 37, 39

Installation 5–12

- antenna 6
- configuring transceiver 7
- DATA INTERFACE connection 6
- data interface connections 11
- power 7
- power connection 10
- steps 6

Interface Output Functions 39  
Intrusive diagnostics (defined) 45

## K

KEY command 28  
Keyboard Commands  
  Command Summary 19  
  Entering Commands 17  
  Error Messages 19  
Keying  
  continuously keyed versus switched carrier operation 3  
  continuously keyed, defined 3  
  on data (DKEY command) 26  
  switched carrier, defined 3

## L

Latency, defined 45  
LEDs  
  DCD 14  
  Indicators  
    Troubleshooting 32  
  indicators, described 14  
  PWR 14  
  RXD 14  
  RXD, Pin 3 11  
  status indicators, illustrated 14  
  TXD 14  
  TXD, Pin 2 11  
Loss. See Signal

## M

MAS (Multiple Address System) 2  
  defined 45  
  illustration 2  
Master Station  
  defined 45  
  keying behavior 3  
MCU (Microcontroller Unit), defined 45  
Microcontroller Unit—See MCU. 45  
MODEL command 28  
Model Number Codes 4  
Model number codes 4  
  displaying (MODEL command) 28  
MODEM command 28  
Modem, set speed. See MODEM command  
Multiple Address System—See MAS. 45

## N

Network-wide diagnostics  
  active messaging, defined 44  
  defined 46  
  enable/disable (DLINK command) 26  
  enable/disable internal RTU (RTU command) 29  
  illustrated 38  
  intrusive diagnostics, defined 45  
  passive messaging (defined) 46  
  procedures 37, 39, 41  
  set radio to root or node (DTYPE command) 26  
Non-intrusive diagnostics—See Passive messaging. 46  
NOT AVAILABLE error message 19  
NOT PROGRAMMED error message 19

## O

Operation 13–15  
  environment specifications for 36

Orderwire Module 41  
Output, 9.9 Vdc regulated, pinout (Pin 19) 12  
OWM command 28  
OWN command 28  
Owner's message, set/display. See OWM command  
Owner's name, set/display. See OWN command

## P

Passive messaging (defined) 46  
Payload data (defined) 46  
Pinouts on data interface 11  
PLC (Programmable Logic Controller), defined 46  
Point-to-multipoint  
  defined 46  
  system 2  
Point-to-point  
  link, illustrated 3  
  system 3  
Poll, defined 46  
Power  
  connection 10  
  display DC voltage (SHOW command) 30  
  display RF output (SHOW command) 30  
  installing 7  
  LED status indicator (PWR LED) 14  
  RF, chart for converting dBm-Watts-Volts 43  
  specifications 36

## Procedures

  checking for alarms (STAT command) 33  
  connecting Hand-Held Terminal (HHT) 15  
  downloading new software 40  
  entering commands using the Hand-Held Terminal (HHT) 17  
  helical filter adjustment 36  
  installation 6  
  measuring RSSI with DC voltmeter 14  
  network-wide diagnostics 37, 39, 41  
  operation 13, 15  
  performance optimization 14  
  reading LED status indicators 14  
  resetting Hand-Held Terminal (HHT) 16  
  troubleshooting 32–34

## Product

  accessories 5  
  description 1  
  display model number code (MODEL command) 28  
  display radio serial number (SER command) 30  
  model number codes 4

Programming radio as root or node 38

Programming, transceiver 15–32

## PTT

  command 28  
  pinout (Pins 14, 16) 12

## PWR

  command 28  
  LED 14

## R

### Radio

  Configuration Software 5, 40  
  Inhibit pinout (Pin 12) 11  
  serial number, displaying (SER command) 30  
Receive Audio Output pinout (Pin 11) 11

### Receiver

  specifications 36  
  system specifications 35

- unquelched signal (Pin 10) 11
- Redundant operation, defined 46
- Remote
  - Station, defined 46
  - Station, illustrated 6
- Resetting
  - Hand-Held Terminal (HHT) (SHIFT,CTRL,SPACE keys) 16
  - transceiver (INIT command) 27
- Revision level
  - display hardware (HREV command) 27
  - display software (SREV command) 31
- RSSI
  - adjusting helical filter for increased signal strength 36
  - command 29
  - command, used to refine antenna heading 14
  - measuring 14
  - pinout (Pin 21) 12
  - vs. Vdc, illustrated 12, 15
- RTS pinout (Pin 4) 11
- RTU
  - command 29
- RTU (Remote Terminal Unit)
  - defined 46
- RUS pinout (Pin10) 11
- RX command 29
- RXD LED
  - description 14
  - Pin 3 11
- RXLEVEL command 30
- RXTOT command 30, 32

## S

- Safety 10
- SCADA (Supervisory Control And Data Acquisition),
  - defined 46
- SCD command 30
- SER command 30
- Set
  - alarm output state (ASENSE command) 23
  - alarm triggers (AMASK command) 21
  - receive time-out timer value (RXTOT command) 30, 32
- SHOW command 30
- Signal
  - ground (Pin 7) 11
  - loss due to coaxial cable length at 960 MHz, table 10
  - loss due to coaxial cable length, table 9
- Simplex 3
  - single-frequency operation 4
  - special case of switched carrier operation 4
- Sleep mode
  - example implementation 13
  - ground on Radio Inhibit pin activates 11
  - Pin 12 11
  - shown by PWR LED status indicator 14
- SNR command 30
- Software
  - diagnostics and control used from PC 40
  - display revision level 31
  - upgrades (.S28 files) 41
  - upgrading 40
  - used for diagnostics and programming 15
- Specifications
  - diagnostics interface 36
  - environment 36
  - power 36

- receiver 36
- receiver system 35
- transceiver 35–36
- transmitter 35
- transmitter system 35
- SREV command 31
- Standing Wave Ratio—See SWR. 46
- STAT command 31
- Supervisory Control And Data Acquisition—See SCADA. 46
- Switched-Carrier 3
- SWR (Standing Wave Ratio), defined 46

## T

- Tables
  - accessories 5
  - alarm code definitions 34
  - command summary 19
  - conversions, dBm-Watts-Volts 43
  - data interface connector pinouts 11
  - Hand-Held Terminal (HHT) operational settings 17
  - LED status indicators 14
  - length vs. loss in coaxial cables 9
  - length vs. loss in coaxial cables at 960 MHz 10
- Technical reference 35–43
- TEMP command 31
- Temperature, displaying internal (TEMP command) 31
- TEXT TOO LONG error message 19
- Timer, set/display time-out value and status (TOT command) 31
- TOT command 31
- Transceiver
  - applications 2
  - configuring for operation 7
  - connectors and indicators, illustrated 1
  - diagnostics using PC software 40
  - dimensions, mounting 8
  - mounting 6, 7
  - programming 15–32
  - specifications 35–36
  - upgrading software 40
- Transmit Audio Input pinout (Pin 9) 11
- Transmitter
  - specifications 35
  - system specifications 35
- Troubleshooting 32–34
  - connecting Hand-Held Terminal (HHT) for displaying alarm codes 15
  - performing network-wide diagnostics 37, 39, 41
  - STAT command (Status) 33
  - using PC software for 40
- TX command 31
- TXD LED
  - description 14
  - Pin 2 11
- TXLEVEL command 32

## U

- UNIT command 32
- UNKNOWN COMMAND error message 19



## Shenzhen Sinosun Technology Co., Ltd.

3A17, South Plaza Cangsong Building, Tairan Industry & Trade Zone ,  
Futian District, Shenzhen, Guangdong, China

Phone: (86)755-83849417 Fax: (86)755-83849434

Web: [www.sinosun.cn](http://www.sinosun.cn) E-Mail: [sales2@sinosun.cn](mailto:sales2@sinosun.cn)